



ENERGY BUILDINGS OIL & GAS CHEMICALS MINING MODULAR

MODERN HEAVY INDUSTRIES (TAICANG) CO., LTD.
MODERN MODULAR ENGINEERING & CONSTRUCTION CO., LTD.
MODERN ENERGY EQUIPMENT MANUFACTURING CO., LTD.



Communication, transparency, teamwork, reliability, and responsibility are essential for a strong business partnership. Modern Group builds lasting professional relationships and strives to be your trusted partner for structural steel and modular solutions.

Mineral Wet Concentrator Plant
Screening Process Module





CONTENTS

Introduction	p.2
Industries	p.5
Facilities	p.10
Services	p. 13
Fabrication	p. 17
Welding	p. 22
Products	p. 25
Coatings	p. 55
Delivery	p. 61
Projects	p. 66
Corporate	p. 77

Chief Executive Officer Message



George Jo

Chairman & CEO
Modern Group Companies

The Modern Commitment

Modern Group is a reliable and trusted global supplier. Our team works hard daily to meet high customer standards and improve continuously.

We've added value to our projects while investing in our employees and their families. In the last four years, our business footprint has tripled, and we are continuously expanding our products, services, and technology.

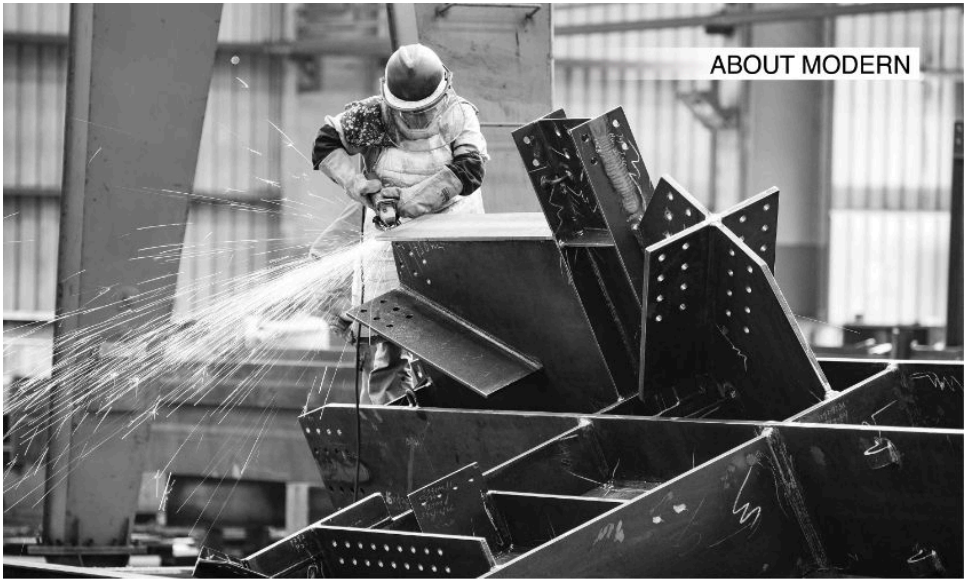
This growth reflects our corporate vision and employees' dedication. While China strengthens its role as a dominant trade partner in global manufacturing, we also tackle important social issues like labor equality, women's and children's protection, and environmental concerns.

We believe that competitiveness goes beyond pricing; it includes proactive management, fairness, sustainability, transparency, compliance, and quality.

Modern Group strives to be an industry leader through hard work, setting ambitious goals, and achieving them.

Thank you for your continued support and cooperation.





Our Story

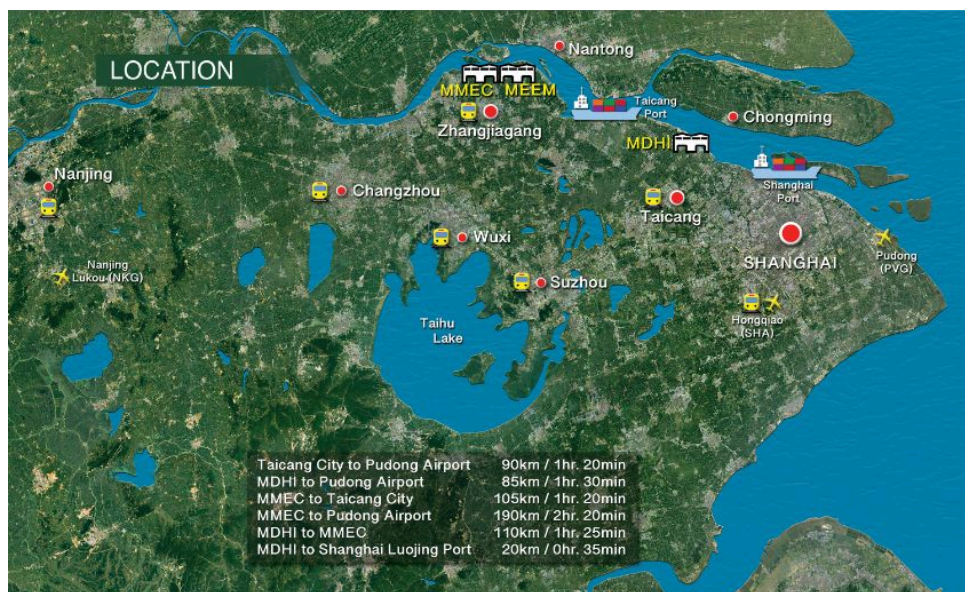
Modern Group is a privately-held family conglomerate specializing in steel structure engineering, with operations in China dating back to the 1990s. In the 2000s, Modern Group completed many important domestic projects, leading to the creation of Modern Heavy Industries (Taicang) Co., Ltd. In 2010, the group's first international fabrication division.

In 2017, Modern Group founded Modular Engineering & Construction Co., Ltd. to meet the growing demand for integrated process modularization and steel structures.

In 2024, the group founded Modern Engineering Equipment Manufacturing Co., Ltd. to consolidate its industrial power, heating, and cooling technology offerings.

Modern Group offers a range of services such as engineering, procurement, structural steel fabrication, and modularization solutions. These services are specifically tailored to meet the needs of the energy, oil and gas, mining, chemicals, and construction industries.





Modern Group operates several strategic locations, including an engineering office in downtown Shanghai, Modern Heavy Industries (MDHI) in Taicang City, Suzhou, and both Modern Modular Engineering and Construction (MMEC) and Modern Energy Equipment Manufacturing (MEEM) situated within the marine terminal of Daxin Port in Zhangjiagang, Jiangsu Province.

Our strategically located facilities in and around Shanghai provide exceptional logistical benefits, ensuring that your visit is both convenient and efficient.

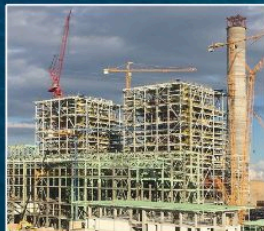


Cenal Karabiga Power Station

THERMAL POWER PLANT BOILER STEEL STRUCTURES

Main and secondary steel structures for the power block, including top girders, boiler support structures, buckstays, and auxiliary building frameworks.

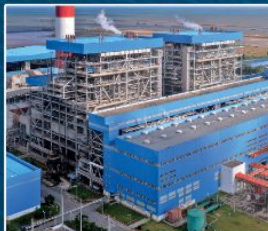
Cenal Power Station
Turkey



Kwinana Waste 2 Energy
Australia



Duyen Hai Power Station
Vietnam



THERMAL POWER PLANT COMBINED-CYCLE / HRSG

Main and secondary steel structures, tube bundles, modular ducts and casings, insulation materials, liners, stacks, tertiary structures, and grating systems.

Al Layyah Combined-Cycle Power Plant
Sharjah, UAE



Aramco Jazan IGCC Project
Saudi Arabia



Egypt Megaproject
New Capital Power Plant



Towantic Energy Center
USA



HIGH RISE & COMPLEX STEEL STRUCTURES



Amador
Cruise Ship Terminal
Panama

Certified Structural Steel for Major Buildings,
Sports Stadiums, Airports, Commercial Complexes,
Manufacturing and Logistics Centers



American Dream
Wave Pool
Space Frame
USA



Football Stadium
Steel Structure
USA

NYU Medical Center
Kimmel Pavilion USA



INDUSTRIES

MODERN GROUP 7



MINING STRUCTURES & MECHANICAL PLATE-WORK

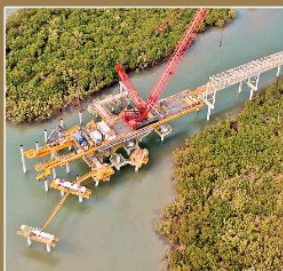
Quellaveco Copper Mine
Peru

Turnkey Modular mining production facilities and steel structures for all types of above-ground and below-ground mining projects. This encompasses conveyor modules, transfer stations, electrical houses, drive units, trusses, trestles, feed control units, hoppers, surge bins, chutes, liners, wear plates, tripper assemblies, feeder frames, and various supplementary components.

Iron Bridge Magnetite Ore Mine
Australia



Roy Hill Port Hedland Wharf
Australia



Kamoa Kakula Phase 3 Copper Mine
Democratic Republic of Congo



OIL, GAS, CHEMICAL, & PETROCHEMICAL PROCESSING FACILITIES

Modern Group manufactures facility structures and process modules for the upstream, midstream, and downstream sectors of the petroleum industry chemicals industry. Our offerings include plant steel structures, buildings, pipe rack modules, complex process modules, process skids, air-cooled condensers, piping spools, storage tanks, platforms, and gratings.

Pluto LNG Train 2
Australia



Shell Franklin Ethylene Cracker
USA



Freeport LNG Project
USA



North Field East LNG
North Field South LNG
Qatar



MDHI WORKSHOP



Workshop &
Office Staff



25:1 = 4%

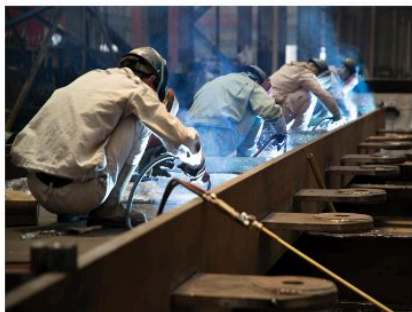
Worker to QC
Inspector Ratio

Modern Heavy Industries (MDHI)

MDHI, founded in 2010, produces high-quality certified steel structures for clients around the world. MDHI focuses on customer satisfaction from first contact to after-sales support.

MDHI produces 3,000 metric tons of fabrication drawings and manufactures 4,000 metric tons of steel structures or 2,500 metric tons of light to medium components like ducts and casings each month.

Our products ship from Taicang International Port, the largest port on the Yangtze River near Shanghai, which helps reduce logistics costs for our customers.



Workshop Layout

1. Bay 1 – CNC Prefab, Built-Up Sections, SAW & ESW - 5,148 m²
2. Bay 2 – Fit & Weld, Heavy Lift, CNC Milling - 5,940 m²
3. Bay 3 – CNC H-Beam Production, Fit & Weld - 5,148 m²
4. Bay 4 – CNC Components Processing, Shot Blasting - 4,752 m²
- 5A. Bay 5A – Structure Painting, & Inspection, Packing - 4,752 m²
- 5B. Bay 5B – Structure Painting, & Inspection, Packing - 4,752 m²
6. Bay 6 – Fit & Weld, Duct & Casing, Steel Press - 5,940 m²
7. Bay 7 – Fit & Weld, Duct & Casing, Stacks - 5,940 m²
8. Bay 8 – Conveyor Blasting, Product Preparation - 5,940 m²
9. Bay 9 – CNC Gratings, Light Steel Fabrication - 2,125 m²
10. Bay 10 – Components & Light Steel Fabrication - 1,700 m²
11. Workers Break Area & Cafeteria
12. MDHI Yard North Entrance
13. Consumable Stores Warehouse
14. Finished Products Marking & Storage - 6,000m²
15. MDHI Yard East Entrance (Longjiang Road)
16. Main Office Building - 3,000 m²
17. Health & Safety Admin, Staff Cafeteria - 1,350 m²
18. Raw Material Receiving & Storage Area - 5,000 m²
19. Trial Assembly & Stack Erection Area - 3,000 m²
20. Flammable Liquids, Chemical Storage - 300 m²

MMEC MODULAR YARD



1. Bay 1 – Prefab, H-Beams, Built-Up Sections, Plate Rolling, Paint Room 9,500 m²
2. Bay 2 – Laser Cut Components, Plate Processing, Fit & Weld, Paint Room 9,500 m²
3. Bay 3 – Medium and Heavy Fit & Weld, Conveyor/Blasting 9,500 m²
4. Bay 4 – CNC H-Beam Production, Structure Fit & Weld, Modular Prefab 9,500 m²
5. Bay 5 – Structure Fit & Weld, Modular Prefabrication 9,500 m²
6. Bay 6 – Finned Tube Production, Slack Fabrication, Platework 9,500 m²
7. Bay 7 – Modular Construction, Heavy, High Lift 6,000 m²
8. Bay 8 – Manual Blasting Bay 1,800 m²
9. Bay 9 – Consumable Storage Warehouse 3,000 m²
10. Bay 10 – Carbon Steel Piping, Multi-Axis Gantry Milling 3,000 m²
11. Bay 11 – Stainless Steel Piping, Light Steel Construction 2,800 m²
12. Raw Material Handling & Storage Yard 6,000 m²
13. CNC Angle Processing 300 m²
14. Main Office 5,000 m²
15. Staff Dormitory & Cafeteria 9,000 m²
16. South Yard Entrance

Modern Modular Engineering & Construction Co., Ltd. (MMEC)

MMEC is a turnkey solution provider, delivering top-quality steel structures across several industries. MMEC is also our base for modular construction, performing detailed engineering, procurement, structure and piping prefabrication, erection, equipment and piping installation, electrical and instrumentation installation, factory acceptance testing, and transport logistics.

MMEC has over 1,000 employees and can produce 60,000 MT of structural steel or 30,000 MT of process modules. MMEC piping shops have the capacity to manufacture between 300,000 and 500,000 diameter-inches of process piping each year. The yard area is 166,000m², with 70,000m² of covered workshops.

Finished products are exported through the adjacent Gangxin Heavy Equipment Port of Zhangjiagang. The port area spans 680,000 square meters and has a 1,353-meter waterfront with five berths, featuring a water depth of 12 meters. There are also two 36-meter approaches that allow for RO/RO load-out, along with additional general cargo approaches.

Zhangjiagang Gangxin Heavy Equipment Port (CNZJG-0073)



17. Yangtze River, 195 NM from Shanghai Port
18. Gangxin Port Pier (1,350 m)
19. General Cargo Approach
20. 36M Ro/Ro & Heavy Cargo Approach (1)
21. 36M Ro/Ro & Heavy Cargo Approach (2)
22. Yard Workshop & Temporary Storage
23. Modular Erection, Construction, & Laydown Yard
24. Bulk Product & Container Storage Yard
25. Bonded Warehouse & Long-Term Storage Yard
26. Gangxin Port Light Vessel Berths
27. Gangxin Port Main Entrance
28. MMEC Outdoor Module Construction Pad 6,500m²
29. Finished Product Storage Area 4,000 m²
30. Customs office, vessel entrance gate (not shown)

FACILITIES

MODERN GROUP 11

ENERGY CENTER

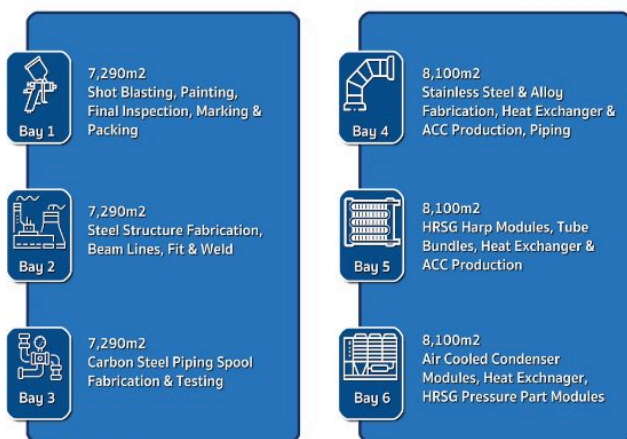


Modern Energy Equipment Manufacturing Co., Ltd. (MEEM)

Modern Energy Equipment Manufacturing Company (MEEM) delivers tailored solutions for a variety of energy-related projects, including HRSG/CCPP, CHP, CFPP, Biomass, and fuel and gas plants. Our offerings encompass heat exchangers, air-cooled condensers, finned tube bundles, Harps, process piping, and the fabrication of both carbon and stainless steel products.

As a dedicated service provider, MEEM seamlessly integrates design, engineering, and technology with specialized equipment to significantly boost the efficiency, reliability, and sustainability of industrial energy operations. We reduce project costs by improving efficiency through adaptable, modular components and by localizing the entire production process.

MEEM is situated in Zhangjiagang, just one kilometer from both the MMEC Modular Yard and the Gangxin Heavy Equipment Port. The yard encompasses 85,000 square meters, with 46,200 square meters of covered workshops. MEEM has a monthly capacity of 3,500 metric tons of heavy structures, or 1,500 metric tons of mixed output.





Estimating

Modern Group's estimators have expertise in structural steel and modular construction. They meticulously collect project requirements to evaluate both the scope and the complexity. Pricing proposals are based on drawings, specifications, and material estimates, and are offered as unit rates, time-and-materials, cost-plus, or lump-sum options.



Prequalification & Audits

Modern Group's prequalification process shows our dedication to excellence with our top-notch facilities, equipment, procedures, documentation, management resources, and product quality.



Bid & Proposals

The Bid & Proposals Manager meticulously prepares bid packages by thoroughly analyzing project specifications, technical and commercial details, business terms, bonding and banking requirements, and insurance needs prior to submission.

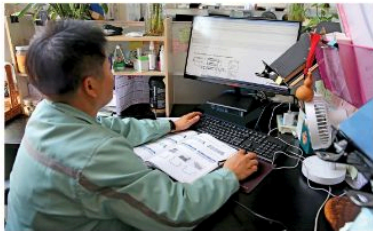
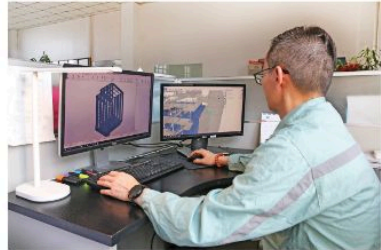
Kickoff Meetings

Kickoff meetings are essential for both parties to collaboratively review the project's scope, specifications, materials, manufacturing processes, coatings, packaging, and delivery requirements. This meeting serves as a valuable opportunity to address and resolve any questions or concerns regarding the project before proceeding.

PLANNING

Engineering

Our engineering team employs Tekla, Tekla Share, and AutoCAD for precise structural detailing. For plate nesting, we utilize SinoCam, FastCam, FastNest, and FastPlot. The modular division excels in offering comprehensive engineering services for modularization, seamlessly integrating structures, piping, equipment, electrical components, and instrumentation. Our robust software suite features Tekla, Tekla Share, AutoCAD, Aveva PDMS, Hexagon PDS, SmartPlant, Spoolgen, Caesar II, and Pipe 2002.



Procurement

Our procurement managers possess extensive expertise in various steel grades, including ASTM, CSA, EN, JIS, AU/NZ, and GB (Chinese standards). We are also equipped to source project consumables and equipment as necessary. Our raw material certificates contain essential information such as batch numbers, heat numbers, material properties, impact test results, and manufacturing codes for quality control. Moreover, we can facilitate external third-party testing whenever required.

Project Management

Every project manager at Modern Group is highly skilled in English. They are responsible for production scheduling, supervising planning and manufacturing, and coordinating resources. They monitor workshop manufacturing and act as the main communication point for the project. They also manage contracts, send status reports, meet delivery milestones, and ensure excellent after-sales support.





In-house testing includes base metal and weld non-destructive examination and testing (VT, MT, UT, PT), and:

Laboratory Inspection & Testing

Modern Group's facilities are equipped with a laboratory to perform inspections and testing required for the company's manufactured products. Third-party testing is arranged according to customer requirements.

- ✓ Brinell Hardness Testing
- ✓ Charpy (Pendulum) Impact Testing
- ✓ Computer Control Electro-hydraulic Servo Testing
- ✓ Magnetic Flaw Detection
- ✓ Metalloscope / Metal Structure Analysis
- ✓ Metallographic Sample Grinding & Polishing
- ✓ Metallographic Testing Projection
- ✓ Positive Material Identification (PMI) Testing
- ✓ Rockwell Hardness Testing
- ✓ Spectrometer for Elemental Testing and Analysis
- ✓ Ultrasonic Flaw Detection
- ✓ Universal Sample Cut-Off
- ✓ Vickers Hardness Testing
- ✓ *X-Ray Inspection & Testing (In-Sourced)

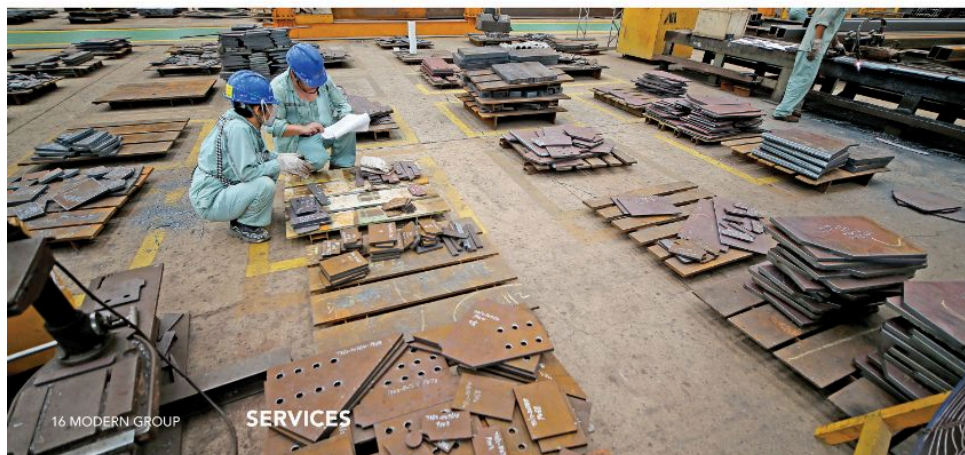
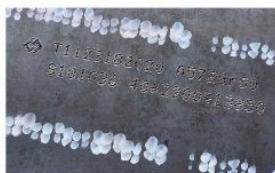
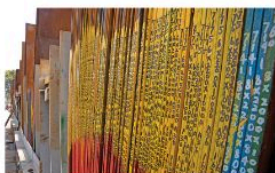
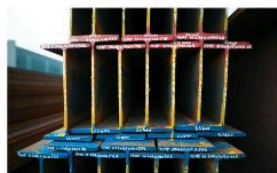


TRACEABILITY



Third-Level Traceability

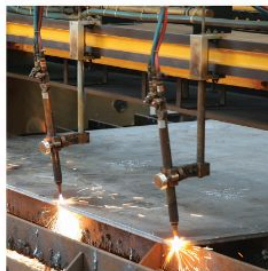
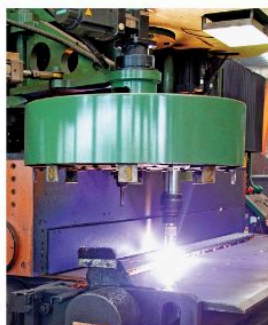
Modern Group's workshops track every steel component in a project using advanced traceability. They document each part's location and track steel batches with heat and part numbers, referring to the original mill test certificate (MTC). If a steel part fails, they can quickly locate and inspect all steel from the same smelter.





The First Process

Fabrication encompasses the complete process, starting with essential operations such as cutting, drilling, punching, and boring. This phase integrates both analog and digital equipment for optimal efficiency.



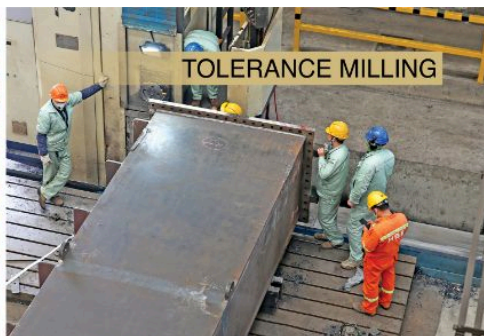
CNC MACHINING



Numerical Control

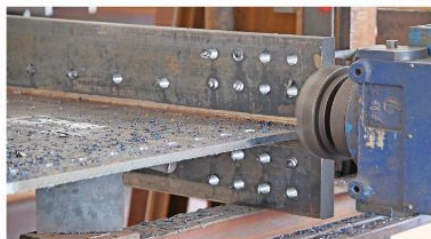
CNC technology enables our machinists to efficiently create various customized parts using vertical, horizontal, and multi-axis mills, drills, lathes, and boring machines without a manual operator directly controlling the machining operation.





Zero Counts

Achieving tolerance compliance involves the precise milling of beams, boxes, long sections, baseplates, pipes, flanges, and complex assemblies. We adhere to a strict tolerance of $\pm 0.005"$ (0.13 mm) for critical lengths and angles, ensuring the highest level of accuracy in all our work. This is achieved by precisely adjusting the alignment along one or more axes, optimizing the cutter head speed, and carefully controlling the pressure applied to the milled surfaces.



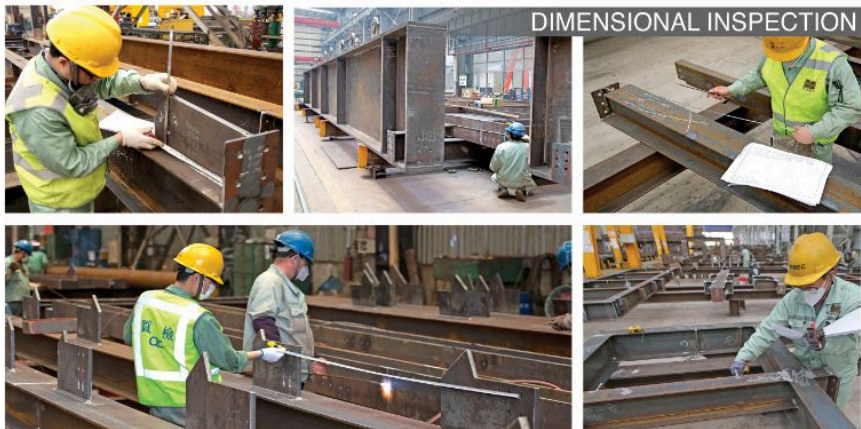


FIT-UP PROCESS

The Fit-Up Process

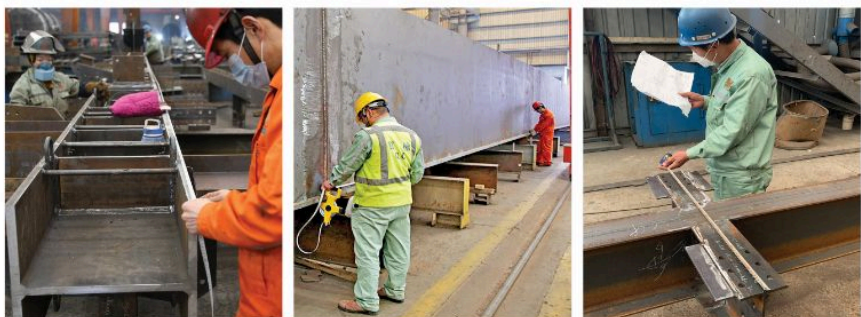
The fit-up process is the crucial step of assembling individual prefabricated components into welded assemblies. The fit-up process holding point is critical for finished product quality, as it determines the dimensional conformity of the structures before welding commences.





Dimension Checks

After fit-up, it is crucial to check the dimensions to ensure that all parts, components, assemblies, or sub-assemblies are within the specified tolerance before welding begins. If there is expected shrinkage or distortion from galvanizing, it must be accounted for beforehand to ensure that the finished work is accurate.



FABRICATION

CODE WELDING



拒绝在不安全的情况下工作

Welding Compliance

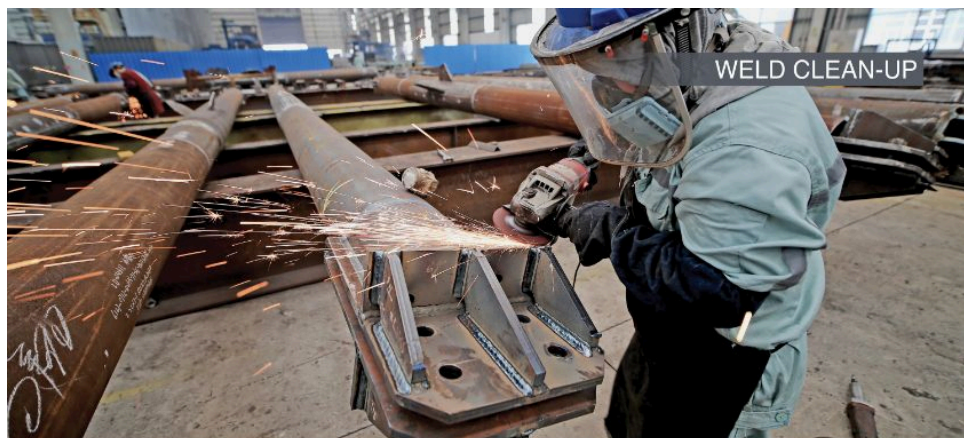
The welders at Modern Group are certified to perform a variety of welding processes that comply with ISO, EN, AWS, ASME, API, CWB, AS/NZ, JIS, and GOST standards. Our welding procedures are created in-house by our IWE and CWI personnel, and non-destructive examination/testing (NDE/NDT) is carried out by our Level 3 inspectors.

Welding Process

Our skilled welders perform Flux-Cored Arc Welding (FCAW), Gas Metal-Arc Welding (GMAW), Tungsten Inert Gas (TIG/GTAW), Shielded Metal-Arc Welding (SMAW), and Submerged Arc Welding (SAW).

The Welding Procedure Specifications (WPS) describe welding procedures in production and aid in quality control. The Procedure Qualification Record (PQR) helps to demonstrate the ability to produce welds possessing the correct mechanical and metallurgical properties.





Weld Quality

After the welding process, the post-welding teams clean all welds and adjacent areas using specialized scrapers, rotary deburring tools, grinders, and wire brushes. This removes any spatter or slag that remains from welding and helps to identify any weld defects requiring correction. The clean-up team works closely with the NDE/NDT inspection team to ensure that all welds are approved in the final inspection.



NON-DESTRUCTIVE TESTING



Best Practices

Weld quality and integrity are meticulously assessed using a range of Non-Destructive Examination and Testing (NDE/NDT) techniques, such as Visual Examination Testing (VT), Magnetic Particle Test (MT), Ultrasonic Testing (UT), Liquid Dye Penetrant Testing (PT), and Radiographic Examination Testing (RT).

Modern Group's inspectors boast advanced, multi-level certifications, ensuring top-tier expertise. Additionally, clients can opt for extra witnessing or third-party inspection in the workshop to reinforce validation.





Best Practice

Hot-rolled "H" sections, steel channels, angles, bars, and flats are manufactured utilizing the best cutting-edge technology and advanced machinery. Automatic processing of cuts, miters, chamfers, bevels, and holes is accurately achieved through precision 1:1 ratio numerical control files.



BUILT-UP SECTIONS



Built-Up Steel Sections

Built-up steel sections encompass a variety of plate sections that are welded together to form custom shapes that are more suitable for specific projects. Standard "H" sections may not always be available in the necessary dimensions due to limited offerings from steel mills. As a result, welded "H" profiles or other complex assemblies are shop fabricated.





PLATE GIRDERS

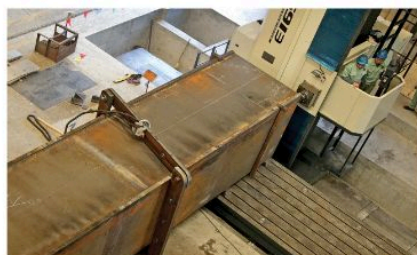
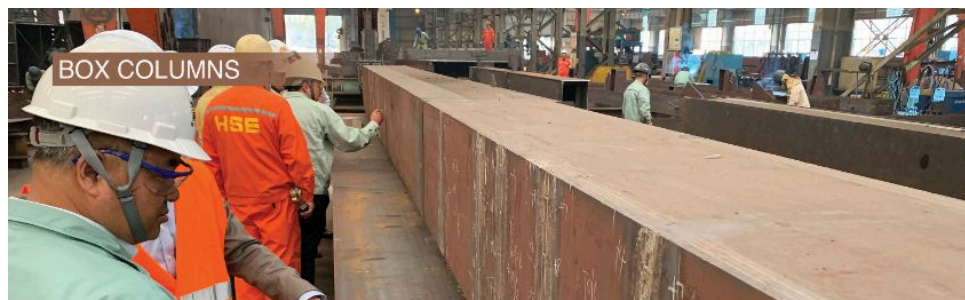
200-Ton Assemblies

Heavy plate girders are essential for constructing large power plant top girder assemblies, boiler suspension beams, building girders, and bridge or railway girders. These girders can be fabricated in various transportable dimensions and may have horizontal splices that are re-assembled at the job site. They can be constructed as straight, curved, parallel-flanged, or variable depth girders. The thickness of the plate components may exceed 203mm (8 inches), and these girders can weigh over 200 tons each.



PRODUCTS

MODERN GROUP 27



What's in the Box?

Box columns are sturdy supports commonly used in power plants and large buildings. They are carefully constructed with internal diaphragm stiffeners. The assembly methods include electro-slag welding (ESW) through slots to secure the stiffeners and all-around full-penetration submerged-arc welding. These columns are designed to withstand difficult service conditions, cyclic loading, seismic shear, and continuous vibrations.





The Higher, The Better

Modern Group specializes in producing exceptionally robust structural steel for high-rise buildings across various categories, including skyscrapers and super-tall buildings with advanced seismic-moment-resisting frame designs.

Modern Heavy Industries proudly holds prestigious certifications from the American Institute of Steel Construction and the City of Los Angeles, California, recognizing its expertise in fabricating unlimited structural steel and high-strength steel.



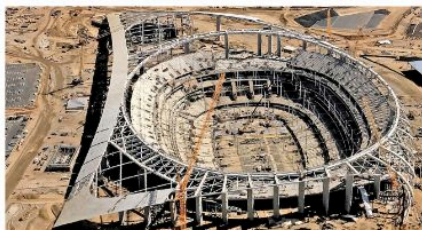
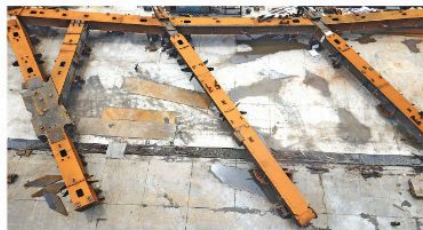
STADIUM STRUCTURES

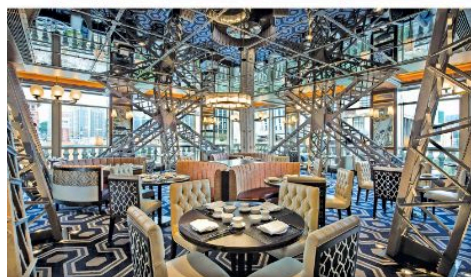
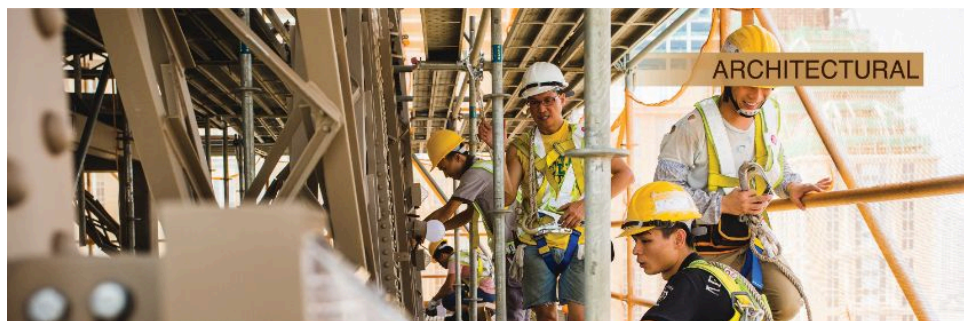


Major Buildings

Modern Group specializes in producing intricate assemblies with precise accuracy for prominent buildings, airports, stadiums, arenas, space frame structures, and bridges.

The large assemblies can exceed 30 meters (98 feet) in length, weigh over 200 tons, and necessitate hundreds of precision bolt holes across multiple connecting surfaces, with a tolerance within 1.5mm.

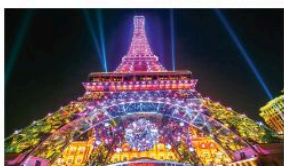




The Grand Vision

Modern Group supplies architectural steelwork, exposed steel structures, steel art, and intricate steel building façades.

The Eiffel Tower-scaled replica at Parisian's Hotel in Macau is an iconic example of a stunning and magnificent structure, full of detail, complemented with almost 1 million hand-welded cosmetic rivets.



PRODUCTS

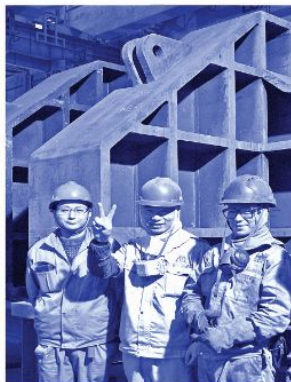
MODERN GROUP 31

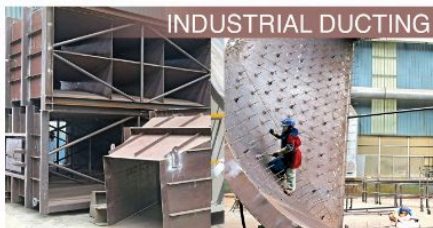
MECHANICAL PLATE



Mechanical Plate

Modern Group excels in the fabrication of plates, offering a wide range of products including hoppers, surge bins, and chutes. Additionally, we provide critical components such as conveyor drive units, take-up carriages, pulley frames, buckets, as well as booms and custom-fabricated wear plates.

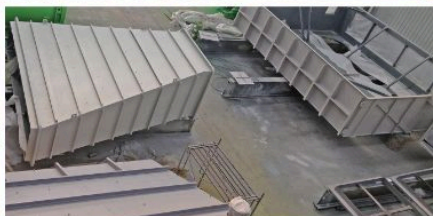
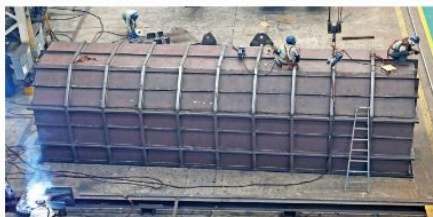




Ducting Packages

Modern Group manufactures steel ducts for conventional power plants, combined-cycle plants, and a wide variety of industrial process plants. We offer high-quality ducting solutions, such as expansive air ducts, exhaust plenums, transitions, rectangular stacks, and filter house structures.

Additionally, we provide diverter dampers, silencers, and expansion joints, all meticulously manufactured to ensure optimal performance, reliability, and efficiency in managing airflow and noise reduction.





Heat Recovery Steam Generator Casing

Modern Group specializes in the manufacturing of customized main casings, inlets, and outlets tailored to diverse HRSG design specifications.

We provide high-quality casing meticulously crafted for heat recovery steam generator plants and industrial applications, which include boiler casings.



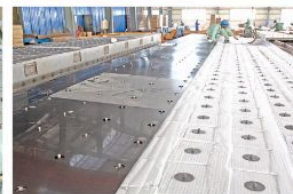


INSULATION & LINERS



Heat Preservation

Modern Group provides engineering support for insulation and stud arrangement drawings. We install studs, various insulation materials, and steel liners for an extensive array of applications, which include Heat Recovery Steam Generator (HRSG) ducts and casings, boiler casings, furnace modules, bypass stacks, industrial ducting, and piping.



CARBON STEEL STACKS



Stacking Up

Modern Group holds the EN 13084-7 certification for steel stack fabrication. We specialize in producing, steel stacks, bypass stacks, cylindrical steel fabrications, and components tailored for single-wall steel chimneys. Our expertise extends to the production of steel liners for free-standing chimneys, alongside insulation and cladding solutions for single-wall steel chimney systems.





High Performance

Stainless steel is undoubtedly the optimal material for stack fabrication when corrosion resistance and high-temperature durability are critical. In addition, high-performance metals and alloys, such as stainless steels, nickel-based alloys, and titanium, serve effectively as linings or cladding on carbon steel stacks.





TANK & VESSEL



Cylindrical Products

Modern Group specializes in the fabrication of a diverse range of tanks and non-pressure vessels tailored for various applications. Our offerings include collection and transfer tanks, industrial storage tanks, and vessels designed for fluid and chemical processing.



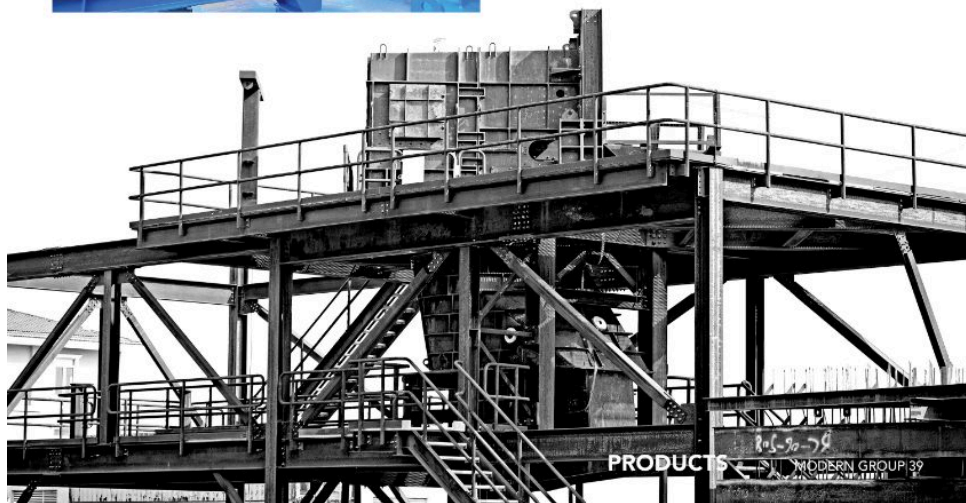


BULK CONVEYORS



Mining Material Handling

Modern Group manufactures modular conveyors, overland truss structures, transfer towers, drive units, chutes, ducts, hoppers, feed control units, and mechanical plate work for various mining and agricultural equipment.



PRODUCTS

8063-58
MODERN GROUP 39



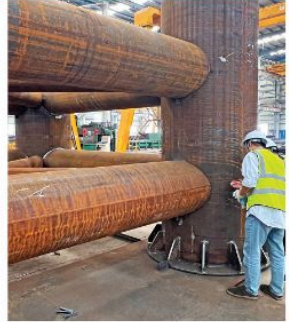
Hollow Sections

Modern Group specializes in the manufacture of customized structural tubing that caters to a diverse range of applications. Our products include theme park structures and roller coaster frameworks, as well as large space frames, complex roof structures, and building structures. Additionally, we produce tubing for canopies, awnings, and various architectural elements.





MARINE & OFFSHORE



Near Shore Structures

Marine terminals, wharf structural steel, and offshore equipment are crucial for the company's mining, oil and gas, and general construction commodities. This category includes steel piles, trestles, mooring dolphins, jacket structures, offshore platform structures, floating pontoons, and access steel, such as platforms, gratings, ladders, handrails, and stairs.



PRODUCTS

MODERN GROUP

CARBON STEEL PIPING



CS Piping

Modern Group provides a wide selection of carbon steel pipes suitable for construction, pipelines, oil and gas projects, mining, and chemical plants. Renowned for their durability, these pipes can endure high pressures and temperatures. Additionally, carbon steel pipes present a cost-effective solution and are fully recyclable, making them an environmentally friendly choice.





STAINLESS & ALLOY PIPING



Corrosion Resistant Piping

Modern Group offers a wide range of piping, including stainless, duplex, super-duplex, P-91, and high-density polyethylene thermoplastic pipes. Our engineers design detailed piping for modular construction, and we can produce over 500,000 dia-inch of pipe and provide 20,000 linear meters of piping insulation and installation services. Our workshops utilize both manual and automated piping machinery for fabrication, welding, and joining, all by skilled workers.



PRODUCTS

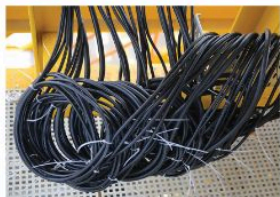
MODERN GROUP 43

ELECTRICAL, INSTRUMENTATION, EQUIPMENT



Electrical & Instrumentation

Our modular team specializes in providing a wide range of electrical and instrumentation products, as well as equipment installation for modular projects. We supply electrical power systems, advanced process control systems, and reliable safety systems. Our offerings include cable trays, wiring, motors, pumps, gauges, distribution boxes, lighting solutions, communication equipment, and a variety of mechanical and automated systems.





Task Equipment

The modular division specializes in creating tailored skids that serve a wide range of major industries. These versatile skids can function independently for specific tasks or be integrated into larger, more complex process modules.

Frequently utilized skid-mounted equipment includes solutions for petrochemical and chemical processing, distillation, injection, purification, mixing, dosing, manifold systems, and countless other applications.



MODULARIZATION



Modular Construction

The modular division builds small and large complex modules as complete systems or combines multiple skids or subsystems into one unit. This includes pre-assembled units, pipe rack modules, modular plants, furnace modules, and construction modules. Our services cover engineering, procurement, structural fabrication, piping prefabrication, erection, equipment installation, construction, electrical and instrumentation work, systems integration, factory testing, and transportation logistics.





HRSG Finned Tubing

Modern Energy Equipment Manufacturing produces HRSG finned-tubing Harps and tube bundles for superheaters, economizers, evaporators, and water preheaters. MEEM focuses on precise craftsmanship, using high-quality materials and advanced machinery, with a strong emphasis on quality control.



PRODUCTS

MODERN GROUP 47

HEAT EXCHANGERS



Industrial Heat Exchangers

Modern Group manufactures air-cooled finned-tube heat exchangers, designed specifically for applications in thermal power plants, oil and gas processing facilities, refining and petrochemical operations, chemical processing plants, and large-scale commercial building projects. Our engineering team provides thermal and mechanical design for equipment, steel structures, piping, and control systems.



AIR-COOLED CONDENSERS



Modern ACC & Heat Exchanger

Modern Group produces air-cooled condensers, including supporting structures, superstructures, A-frame structures, fan systems, wind walls, duct systems, and manifolds.



Modularized Air-Cooled Condensers (ACC) include finned-tube heat exchangers, piping, pumps, tanks, and electrical and control systems. Every ACC is designed to address specific project requirements and consists of both shop-fabricated and procured accessories.



PRODUCTS

ACCESS PLATFORMS



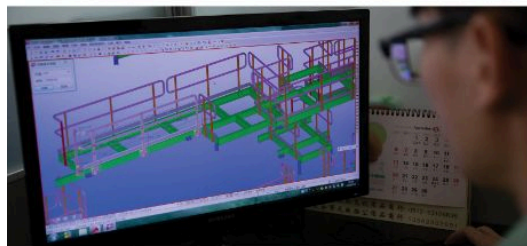
Where to Walk

Modern Group provides industrial access platforms, walkways, elevated catwalks, mezzanines, footbridges, and supporting structures. We also offer 3D modeling and detailing services for these structures and gratings.



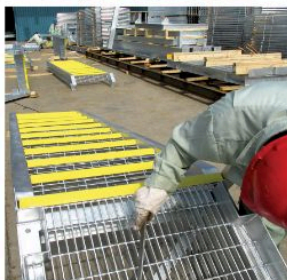
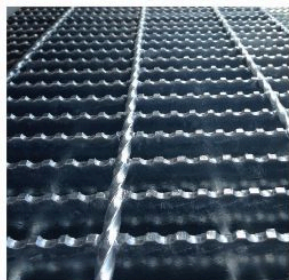


STEEL GRATINGS



STEEL GRATINGS

Modern Group produces gratings, stair treads, nosing, and decking in various dimensions and weights. The grating panels are designed in-house, with platforms to ensure fit quality. Grating clips and shop installation are typically provided to ensure efficient on-site assembly.



TERTIARY STRUCTURES

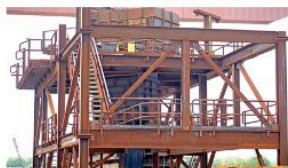


The Other Stuff

Tertiary structures include ladders, cage ladders, stair stringers, spiral staircases, stair towers, handrails, grating treads, and pipe supports.

Additional products include safety gates, ventilation louvers, roof plates, wind walls, light steel frameworks, worker fall prevention panels, cable trays, conduits, junction boxes, brackets, and support structures.





Ready for Erection

Trial assembly is a critical process where our erection teams assemble specific structures to verify dimensional accuracy and ensure that key assemblies fit properly for jobsite construction. This proactive approach reduces risks, lowers costs, and decreases liability, enabling stakeholders to concentrate on other key project aspects without worrying about constructability.



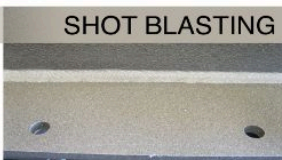
LIFTING FRAMES & LOAD TESTING



Equipment Lifting Frames

Modern Group offers lifting solutions for equipment including process modules, modular HRSG, construction modules, and heavy steel assemblies. Load testing is conducted to ensure that frames and lugs meet design tolerances. The procurement team sources lifting accessories based on customer requirements. Mobile cranes and quay-side port luffing cranes are utilized to carry out a range of load testing of various frame types.

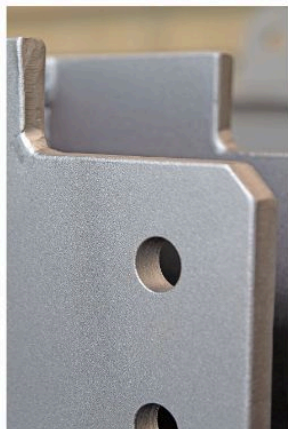




SHOT BLASTING

Coating Preparation

Modern Group workshops use advanced shotblasting equipment to clean steel surfaces of rust, dirt, oil, and paint before applying coatings. We offer various blasting media for different surface textures, following SSPC/NACE and ISO 8501 (Sa) standards. Our conveyor blasters and enclosed blasting rooms can handle both small and large components for efficient blasting.



COATING PROCESS

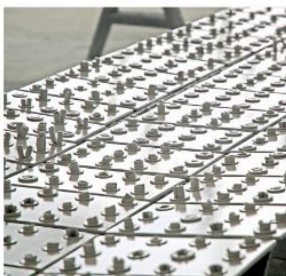
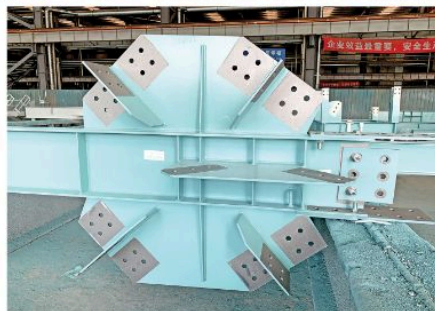
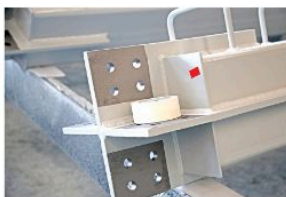
SLIP-CRITICAL CONNECTIONS



To Mask, or Not To Mask?

In a slip-critical connection, bolts create friction that stops movement between surfaces, ensuring the structure remains stable. This mechanism is essential in both primary and secondary steel connections. However, coatings on these surfaces can compromise this friction, potentially transforming the joint into a bearing-type connection. This transition subjects the bolts to shear forces, resulting in instability of the interconnected components.

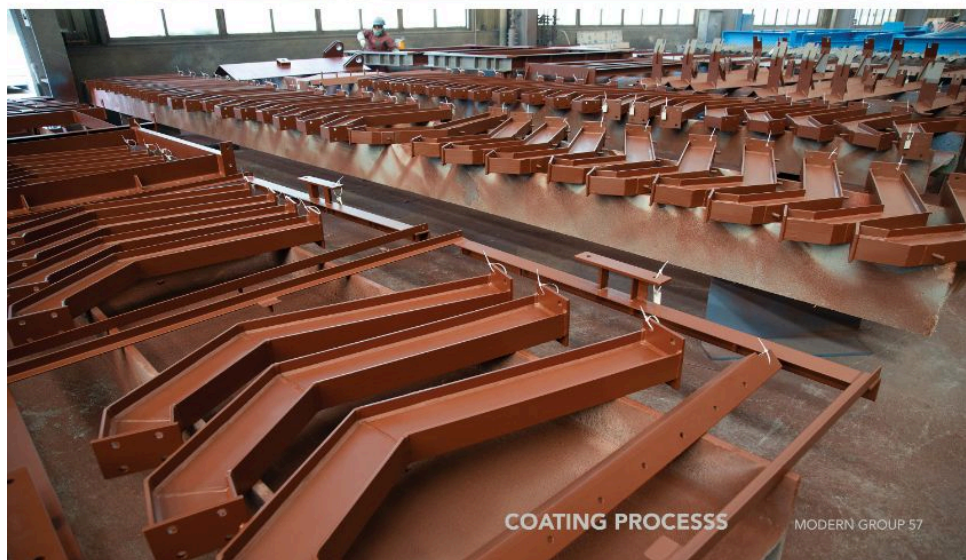
To reduce friction between joined surfaces, steel is often left bare or coated with a zinc-rich Class B primer designed for high-strength bolted connections.





CORROSION RESISTANCE

Modern Group exclusively employs premium-grade primers to protect our structural steel. Primers are generally applied within four hours of shot blasting to prevent oxidation contamination. These primers are highly effective in inhibiting corrosion, providing superior protection before additional coatings are applied. Popular choices for shielding structural steel include zinc-rich epoxies, zinc phosphate, red oxide, and abrasion-resistant epoxy mastics.



COATING PROCESS

MODERN GROUP 57

INTERMEDIATE COATING



In The Middle

The intermediate paint layers play a vital role in enhancing paint thickness and bolstering the protection of steel surfaces.

Their rich pigmentation effectively blocks the penetration of air and water. Once the intermediate coat dries, painters sand it to create a textured surface that improves adhesion for the topcoat.





Painting The Future

Modern Group workshops proudly hold AISC certification for the implementation of advanced protective coating systems. Our expert painting teams use a wide range of high-performance coatings, including epoxies, urethanes, alkyds, and enamels, chosen for different project needs. Coating application is a key final step in manufacturing that showcases our team's craftsmanship and commitment to quality.



COATING PROCESS

MODERN GROUP 59

GALVANIZING PROCESS



DEGREASING



LOW
TEMPERATURE
ALKALINE
BATH

RINSING



ALKALINE
REMOVAL
& CLEANLINESS
CHECK

PICKLING



HYDROCHLORIC
ACID - STAIN
& IMPURITY
REMOVAL

RINSING



WATER RINSE
PROCESS TO
REMOVE
ACID

FLUXING



ZINC AMMONIUM
CHLORIDE TO
REMOVE
IRON OXIDES

DRYING



POST-FLUXING
NATURAL
DRYING
PROCESS

GALVANIZING



99.99% PURITY
ZINC BATH
AT 450°C
(842°F)

COOLING



HOLDING
POINT FOR
TEMPERATURE
REDUCTION

PASSIVATION

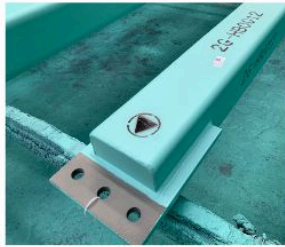


EXTRA COATING
OF ZINC
CARBONATE
PROTECTS ZINC

The Ultimate Coating

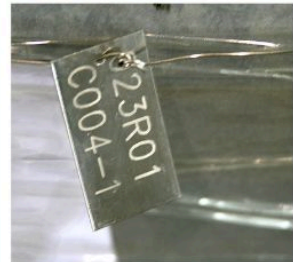
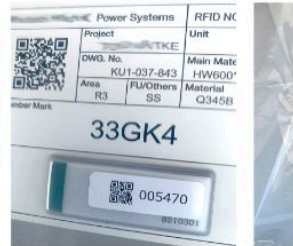
For long-lasting protection, we follow ASTM A-123 standards for galvanization unless otherwise specified. Our hot-dip galvanizing immerses steel in molten zinc, forming a strong alloy coating that ensures excellent corrosion resistance. Galvanizing is often more cost-effective than painting and the zinc coating lasts for years with little maintenance.





Product Identification

Modern Group offers various marking and tracking solutions, such as lettering, stencils, paint marks, dot matrix printing, stamps, tags, barcodes, QR codes, and embossed marks. RFID tags, when used, consist of a transponder, receiver, and transmitter, enable tracking and quick identification of products on the job site.



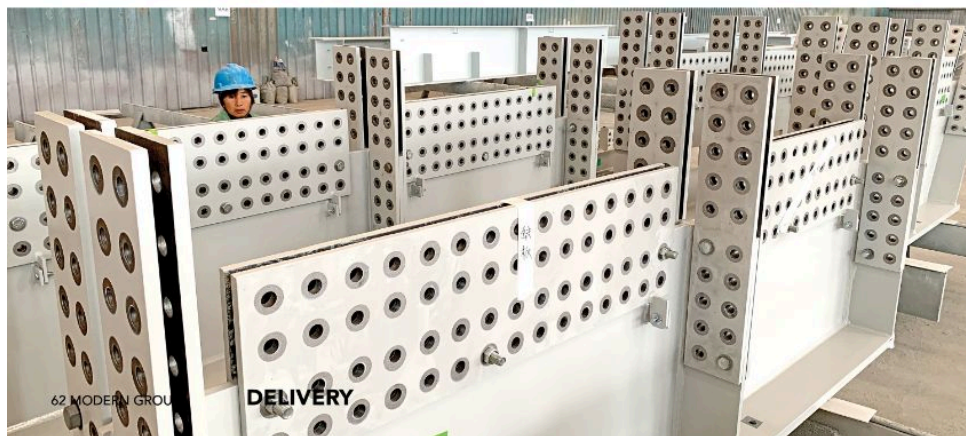
DELIVERY

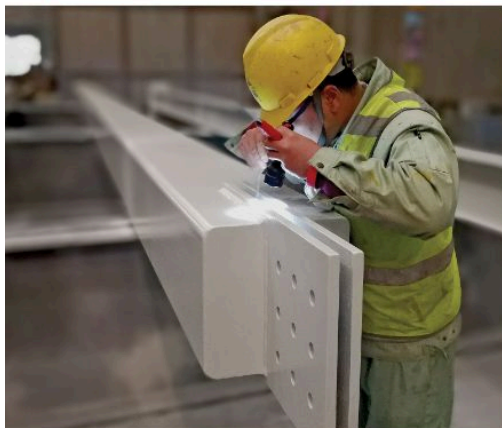
PRE-ASSEMBLY



A Perfect Match

To meet delivery requirements, select products are assembled in-shop before packaging. The pre-assembly process aims to simplify the erection at the job site by reducing the need to search for small components used in connections, stairs, stair towers, platforms, gratings, and other minor assemblies. Additionally, this process reduces manpower, cuts job-site costs, and simplifies overall project management.





Before Delivery

The final inspection is the last step to check quality and appearance. This is when final touch-ups happen. The customer's representative approve delivery, and the paperwork begins. We verify dimensions, fabrication tolerances, welding quality, and coatings to ensure the finished products meet high standards for customer satisfaction and timely delivery.



DELIVERY



TRANSPORT PACKING

Modern Group offers exceptional international packing services that guarantee your goods arrive safely and securely. Choose from break-bulk, various container types, truck, sea, or rail shipping options. You can specify your own packing requirements or utilize our proven internal methods. We provide high-quality packing materials like heavy-duty plastic covers, canvas tarps, shrink wrap, and various marking and tracking options.





GLOBAL LOGISTICS



Outbound Shipping

Modern Group's logistics managers play a crucial role in helping customers achieve seamless and efficient product delivery. We offer services such as packing list preparation, volume calculations, freight cost estimates, vessel bookings, insurance, customs clearance, and issuing bills of lading and certificates of origin. Our professional witnessing services include comprehensive photographic documentation of the loading process. We offer multiple shipping options, including standard containers, flat racks, packing frames, breakbulk, and roll-on/roll-off, to ensure your cargo is handled carefully.



BUILDING PROJECTS

- 1 Australia Black Snake Road Bridge Project - Steel Girders, Bridge Deck, Barrier Structures, Handrails
- 2 Australia Darwin Ship Lift Facility - Caisson Structures, Modular Gangway, Platforms, Outriggers, Handrails, Grating, Temporary Structures
- 3 Australia Eighty Eight O'Connell Residential & Commercial Building Project Custom Fabricated Rectangular Hollow Sections
- 4 Australia Industrial Warehouse Steel Structures, Mezzanine, Wall Girts, Purlins, Railings
- 5 Australia Industrial Work Zone Building Project Building Steel Structures
- 6 Australia Junction Thrive Social Housing Project - Fabricated Steel Channels
- 7 Australia Moxy Sydney Pitt Street Hotel - High-Rise Hotel Building Structural Steel
- 8 Australia Parker Point Desalination Plant - Treatment Building Structural Steel, Platforms, Grating, Secondary Steel
- 9 Australia Perth Airport Bus & Taxi Station Canopy Project Shelter Structural Steel & Canopy Pipe Trusses
- 10 Australia Perth Airport Terminal 1 Expansion Project - Steel Structures, Framing, Walkways, Roof Trusses, Custom Arched Structural Tubing
- 11 Australia Soutside Memorial Swimming Pool Project Long-Span Pool Roof Curved Pipe Trusses
- 12 Brazil Michelin Brazil Tire Manufacturing Plant Workshop Structural Steel
- 13 Brazil Volkswagen Automotive Manufacturing Painting Plant Structural Steel
- 14 Canada Campbell River First Nations Warehouse Project Steel Structures, Accessories
- 15 China Beijing National Stadium Construction - Erection of Stadium Steel Structures and Modular Section Assemblies
- 16 China Changzhou Xinyu Tianli Automobile Manufacturing Plant Steel Structures
- 17 China Curved Roof Beam Steel Structures
- 18 China Fabricated Steel Columns for Building Barrier & Partition Walls
- 19 China HKRI Taikoo Hui (Dazhongli) Commercial Tower Roof Atrium Superstructure
- 20 China Kunming Changshui International Airport - Curved and Arched Asymmetrical Structural Assemblies & Erection Services
- 21 China Kunshan Jingying 5th Tower Architectural Roof Steel Structures
- 22 China Lingang Songjiang High-Tech Park Building Roof & Auxiliary Building Structural Steel
- 23 China Lotus Mountain Hotel Building Structural Steel, Box Columns, Support Columns, Floor Beams, Roof Framing
- 24 China Museum of Contemporary Art & Exhibition Center - Architectural Steel Structures, Erection Services
- 25 China Nanjing Gym Center Project Curved Structural Roof Trusses
- 26 China Oji Kraft Paper Mill Structural Steel, Platforms, Pipe Bridges, Supports, Stairs, Secondary Steel
- 27 China Optics Valley International Tennis Center - Structural Steel Erection Services
- 28 China Pudong Airport Corporate Center Access Steel Structures, Walkways
- 29 China Shanghai Aviation Service Center X-1 Area Elevated Walkways and Stairs, Box Girders, Beams
- 30 China Shanghai Baoli Real-Estate Structural Steel for Building Structure
- 31 China Shanghai Disneyland Resort Arched Atrium Canopy Structure

HKRI Taikoo Hui Commercial Tower



BUILDING PROJECTS

32	China	Shanghai Expo Axis Modification Steel Structures for Expo Pavilion Structure
33	China	Shanghai Grand Opera House - Opera Halls Structural Steel Support Columns, Beams, and Trusses
34	China	Shanghai Grand Opera House Main Building Structural Steel, Supporting Columns, Secondary Structures
35	China	Shanghai Huangpu District Commercial Building Steel Structures (T1 Tower)-1 High-Rise Structural Steel Columns & Beams
36	China	Shanghai Huangpu District Commercial Building Steel Structures (T1 Tower)-2 High-Rise Structural Steel Columns & Beams
37	China	Shenzhen Bao'an International Airport - Structural Steel Erection Services
38	China	Shenzhen Bay Sports Center Multi-Use Stadium - Structural Steel, Support Columns, Arched Structural Assemblies
39	China	Skechers Footwear Distribution & Logistics Center Warehouse and Office Structural Steel
40	China	Parisian's Hotel (160M) Eiffel Tower Replica Project - Truss and Lattice Structures, Arches, Architectural Elements, Welded Rivets
41	China	Tower Crane Structural Steel Assemblies, Pipes, Beams and Bearing Supports
42	China	YangGao Roadway Overpass Viaduct Steel Structures
43	China	Yuguan Mushroom Cultivation Facility Process Plant Building Steel Structures
44	France	GL Events Exhibition Hall Display Structure Prototypes
45	Japan	Nippon Steel - Hanshin Rolled Steel Plate Factory - Plant & Office Steel Structures, Truss Sections, Box Columns, Handrails
46	Japan	UACJ Aluminum Continuous Annealing Line Pretreatment Facility Steel Structures
47	Mongolia	Shanghai Shangri-La Hotel Elevated Roof Curved Space-frame Structural Steel Trusses
48	N.Caledonia	New Caledonia Museum Project Galvanized Structural Steel Framing Sections
49	Panama	Cold Formed Steel Sheet Piles Bent Plate, H-Beam Fabrication
50	Panama	Panama City Amador Cruise Ship Terminal Main & Secondary Structural Steel
51	Saudi Arabia	King Abdulaziz International Airport - Terminal Upgrade & Expansion Steel Structures and Secondary Steel
52	U.A.E.	Hot Dip Galvanizing Production Line Elevated Platforms, Gratings, Handrails
53	USA	American Dream Water Park Wave Pool Curved Space-Frame Truss Structural Steel
54	USA	Commercial Building Structure Welded H-Beams
55	USA	Automated Parking Structure Vehicle Lift Elevator System Steel Structures
56	USA	Mayo Clinic Integrated Education & Research Facility - Architectural Membrane Canopies - Steel Assemblies, Supports
57	USA	National Football League Stadium - Superstructure, Roof Compression Ring, Asymmetrical Box Sections, Girders, Nodes
58	USA	NYU Langone Medical Center, Kimmel Pavilion High-Rise Building Main Steel Structures & Heavy Steel Plate Sections
59	USA	Soccer League Stadium - Main & Roof Structures, Compression Ring, Arches, Tension Rings, Struts, Cable Nodes, Trellis
60	USA	San Diego Airport Architectural Steel Arched Pedestrian Canopies
61	USA	Starlight Theatre Steel Structure Arched Canopy Steel Structure
62	USA	The Mark Parking Lift Project - Steel Structure Framing for Parking Lot Lift

Optics Valley International Tennis Center



PROJECTS

MODERN GROUP 67

CHEMICAL PLANTS

63	Australia	Ceres 2.12 MTPA Ammonia-Urea Project - Derrick, Ammonia, Syngas & Tank Flares, Piping, Platforms, Ladders, Grating, Stairs
64	Belgium	Ineos Project One - Ethane Cracker Project Elevated Fixed Flare Derrick Structure, Platforms, Handrails, Ladders, Gratings
65	Brazil	Invista Lycra Fiber Production Facility - Plant Steel Structures, Buildings & Equipment Supports
66	Canada	ESST Project Modularized Recovery Pump Skids, Steel Structures, Equipment, Piping, E&I, Gratings, Handrails,
67	Canada	Varennes Carbon Recycling - Biomethanol / Green Hydrogen - Structures, Conveyors, Gratings, Secondary Steel, Drive Chain
68	China	INEOS Styrolution Kaimen Project Combustion Flare Tower Structures, Platforms, Gratings, Ladders, Handrails
69	China	Invista Adiponitrile Nylon 6.6 Chemical Plant - 4 Noxidizer Vessels, Exhaust Vent Stack, Stairs, Platforms
70	China	Invista Chemical Plant Thermal Oxidizer - Ammonia Skids, Boiler Ammonia Skids, Piping, Tubing, E&I, Ammonia Skid Vaporizer
71	China	Invista Adiponitrile Nylon 6.6 Chemical Plant Ductwork, Transition and Supports for Thermal Oxidizer Package
72	China	Invista Chemical Plant Phase III Boiler Ducts, Gas Ducts, SCR Inlet/Outlet, Economizer Outlet, Boiler Ductwork, Secondary Steel
73	China	Invista Adiponitrile Nylon 6.6 Chemical Plant Phase III Stacks, Stack Platform, Ladders
74	China	Invista Adiponitrile Nylon 6.6 Chemical Plant Project Plant Steel Structures & Chemical Stacks
75	China	Shanghai Jinshan Chemical Industry Park - Terminal Phase II Plant Steel Structures
76	China	Shenhua-Dow Coal to Methyl Alcohol Plant Steel Structures & Pipe Racks
77	China	Sinochem-Bayer Chemical Manufacturing Center Platforms and Ladders
78	China	SP Chemicals Olefins (VVT Shanghai) Integrated Modular Ethylene Quench-Water Treatment Skids
79	Malaysia	Petronas Chemicals Package Boiler Structural Steel, Flue Casing, Inlet, Stack, Platforms, Grating, Handrails
80	Nigeria	Indorama Eleme Fertilizer & Chemicals - Ammonia Plant Train 3 Steel Electrical & Instrumentation Supplemental Steel Structures
81	Nigeria	Indorama Eleme Fertilizer & Chemicals 2300 MTPD Ammonia & 4000 MTPD Urea Plant - Train 3 Lot-2 Structures
82	Nigeria	Indorama Urea Plant Steel Buildings, ACES, Granulation Platforms, Checkered Plate, Grating, Handrails, Ladders, Staircases
83	Nigeria	Indorama Eleme Urea Plant Structures, Reformer Stack, Radiant Panel, Duct Panel, Stack, Platform, Handrails, Ladders, Roofing
84	USA	Formosa Plastics Corp Train 3 - Polypropylene Plant Structures, Pipe Rack Modules, Piping, E&I, Platforms, Grating, 2nd Steel
85	USA	HeXia Chemical Plant Project Steel Structures, Supports, Secondary Steel
86	USA	Li-Cycle Lithium Waste Effluent 0-Liquid Discharge Modular Evaporator - Main & Secondary steel, ladders, platform, grating, stairs
87	USA	M&G Chemicals Polyethylene Terephthalate Plant Project Modular Pipe Racks, Ladders, Platforms, Handrails, Gratings
88	USA	Mitsubishi Chemicals Electrolyte Solution Process Plant - Modularized Chemical Plant Steel Structures
89	Venezuela	Chemical Plant Process Module Steel Structure Framing

Indorama Eleme Fertilizer & Chemicals
2300 MTPD Ammonia & 4000 MTPD Urea Plant



HEAT RECOVERY STEAM GENERATOR

90	Algeria	Ain Arnat Combined-Cycle Power Plant 400MW x 3 HRSG Air Intakes, Ducts, Filter-house Structures
91	Angola	Soyo 1 - 750 (MW) x 4 HRSG - Steam and Gas (STAG) Steel Stacks & Silencers
92	Armenia	Yerevan 2 - 250 (MW) Combined-Cycle Power Plant x1 HRSG Main Steel, Duct & Casing, Stack, Pipe Supports, Secondary Steel
93	Bangladesh	Ashuganj Combined Cycle Power Plant Project (North) 450 (MW) x 2-HRSG Ducts, Casing
94	Bangladesh	Ashuganj Combined Cycle Power Plant Project (North) 450 (MW) x 2-HRSG Platforms, Ladders, Stair Towers, Drum Supports
95	Bangladesh	Bhola II 220 (MW) Combined-Cycle Power Plant x2 HRSG Casing Stairs
96	Bangladesh	Bhola II 220 (MW) Combined-Cycle Power Plant x2 HRSG Ducts, Platforms, Stacks
97	Bangladesh	Kushiara 163 (MW) HRSG - Main Steel, Stair Tower, Platforms, Gratings, Handrails, Ladders, Walkways
98	Brazil	Santa Cruz Repower 2 x HRSG Structural Steel Non-Pressure Parts
99	Brazil	UTE Barcarena 630 (MW) Combined-Cycle Power Plant Stack Templates
100	Brazil	UTE GNA II 1,672 MW Power Station x3 HRSGs Main Steel, Secondary Steel, Inlet Duct, Outlet Duct, Stacks, Pipe Supports
101	Canada	Cascade 900 (MW) CCGT x2 HRSG Main Steel, Ducts & Casings, Handrails, Stacks, Pipe Supports, Bumpers and Insulation
102	Canada	Suncor Oil Sands Coke Boiler - 2 Units HRSG Modular Duct & Casing, Baffles, Stair Tower, Gratings, Platforms, Handrails
103	Canada	Synchrude Mine HRSG Casing, Main Steel, Inlet Duct, Burner Duct, SCR Duct, Secondary Steel and Stair Towers
104	China	Arctic LNG-2 500 (MW) Onshore Power Plant - Modular Gas Turbine Power Plant Steel Structures, Roof Structure
105	China	Sun Ba Power Phase II 1,100 (MW) Combined Cycle Gas-Fired Power Plant Hoisting Beams
106	Cyprus	Vasilikos 160 (MW) CCGT - P5/U6 - HRSG Ducts & Casing, Main & Secondary Steel, Lifting Beams, Monorails
107	Egypt	Beni Sufel 4.8GW * 8 HRSG, New Capital Power Station 2.4GW * 4 HRSG Modular D&C, Stacks, Stair Tower, Platforms, 2nd Stl.
108	Egypt	Egypt Megaproject 24 units of HRSGs Secondary Steel, Stair Tower, Platforms, Rails, Grating, Cage Ladders, Pipe Supports
109	Georgia	Gardabani II 230 (MW) Combined Cycle Power Plant x2 HRSG - Platform Structures and Support Steel
110	Greece	Alexandropolis 840 (MW) Combined-Cycle Power Plant Air-Cooled Condenser Steel Structures, Piping Supports
111	Greece	Alexandropolis 840 (MW) CCPP - Main Structure, Fan Deck Plates, Handrails, Staircases, Grating, Aluminum Plates, 2nd Steel
112	Greece	Greece Komotini 665 (MW) CCPP x1HRSG Main Steel, Secondary Steel, Inlet Duct, Outlet Duct & Stack, Pipe Supports
113	Iraq	Khormala (Phase II) 640 (MW) Power Plant Project Lifting Beams
114	Italy	Air-Cooled Condenser Module Lifting Devices
115	Italy	Montefalcone 880 (MW) CCGT - Main Steel, Duct & Casings, Boiler Casing, Insulation & Liners, Stacks, Platforms, Pipe Supports
116	Italy	Ostiglia 880MW Multi-Shaft Combined Cycle Power Plant Main Steel, Duct & Casings, Stacks, Stair Towers, Secondary Steel
117	Japan	Fukuyama Joint Thermal Power Station No. 2 GTCC HRSG - Ducts, Casing, Structural Steel, Platforms, Supports, Handrails
118	Japan	Fukuyama Joint Thermal Power Station No. 2 GTCC HRSG - Structural Steel, Platforms, Pipe Racks, Handrail, Stair Treads
119	Japan	Fukuyama Joint Thermal Power Station No. 2 GTCC HRSG Standing Beam & Support Beams
120	Japan	Ogishima 180 (MW) x 1 HRSG Duct & Casing, Main Steel, Platforms, Insulation, Liners.
121	Japan	Takasago Heat Recovery Steam Generator (HRSG) Testing Facility Structural Steel
122	Japan	Takasago Industrial Works Co-Gen Unit-2 - HRSG Casing, Ducts, Pressure Part Supports, Liners, Insulation, Baffle Plates
123	Kazakhstan	Turkistan 1,000 (MW) Combined-Cycle Gas Turbine Power Plant - Foundation Anchorages
124	Kazakhstan	Turkistan CCGT Power Plant - 48 Units Air Cooled Condenser Modules, Sub-Structures, A-Frames, Gratings, Secondary Steel
125	Malaysia	Alor Gajah (Melaka) 2,242 (MW) Combined Cycle Power Station x3 HRSG Turbine Noise Enclosures
126	Mexico	Gonzalez Ortega 641 (MW) x2 CCGT HRSG - Platforms, Stairway, Grating, Handrail, Ladder, Tertiary & Misc. Steel
127	Mexico	San Luis De La Paz 205 MW Combined Cycle Power Plant ACC Structures, Supports, Walkways, Handrails, Gratings
128	Mexico	San Luis Rio Colorado 648(MW) CCGT - HRSG Structure, Platforms, Stairway, Grating, Handrail, Ladders, Misc.
129	Mexico	Tuxpan Phase 1 (1 GW) CCGT Power Plant Platforms, Support Structures, Stairway, Gratings, Handrails, Ladders
130	Myanmar	Thahton 120 (MW) x 2 HRSG Gas-Fired Power Station - Steel Bypass Stacks
131	Netherlands	Exhaust Gas System Prototype, Air Injection System for Heat Recovery Steam Generator
132	Oman	Haima West (20MW) Combined-Cycle Power Plant Bypass Stack
133	Oman	Haima West (20MW) Combined-Cycle Power Plant HRSG Casing & Ducts, Bypass Stack
134	Oman	Ibri CCPP 1,509 (MW) x 4 HRSG - Stair Towers, Platforms, Drum Supports, Columns, Beams, Handrail, Grating
135	Oman	Ibri Independent Power Project x4 HRSG Pipe Supports, Rigid Supports, Beams, Columns, Bolts, Anchor Bolts
136	Oman	Sehar 3 - 1,710 (MW) x 4 HRSG - Stair Towers, Platforms, Drum Supports, Columns, Beams, Handrail, Grating

Usina Termelétrica GNA II
Combined-Cycle Power Plant

PROJECTS

MODERN GROUP 69

HEAT RECOVERY STEAM GENERATOR

137	Oman	Sohar-3 Independent Power Project x4 HRSG Pipe Supports, Rigid Supports, Beams, Columns, Bolts, Anchor Bolts
138	Pakistan	Ballolki 1223 (MW) 2 x HRSG Structures, Service Platforms, Furnace Roof Canopy, Pump Station Supports, Pipe Supports
139	Poland	Adamów 600 MW Combined Cycle Gas Turbine Power Plant HRSG Structure & Stack Template, Column & Stack Anchorages
140	Poland	Rybnik 900 (MW) CCGT x1 HRSG Main Steel, Suspension Beams, Casing, Ducts, Stack, Stair Tower, Grating, 2nd Steel
141	Qatar	North Field South LNG - Power Station HRSG Ducts, Stacks, Bypass Stacks, Platforms, Steam Drums, Grating, 2nd Steel
142	Qatar	North Field South LNG - HRSG Thermal Oxidizer Boiler Project Stacks, Stack Platforms, Air Ducts, WindBox, Supports
143	Qatar	North Field South LNG - ACC Structures, Piping, Ducting, Windwalls, Bundle Frames, Walkways, 2nd Steel
144	Qatar	North Field East LNG Power Station x12 HRSG Structures, Ducts, Stacks, Bypass Stacks, Platforms, Stairway, Grating, 2nd Stl.
145	Romania	Mintia 1700 (MW) CCPP x2 HRSG - Main Structures, Modular Casing, Platform, Stairs, Stack, Inlet & Outlet Ducts, 2nd Steel
146	Russia	Arctic LNG Power Plant - 20 Units ACC Structures, Platforms, Tube Bundle Supports, Headers, Grating, Ladders, Handrails
147	Russia	Nizhnekamsk 495 (MW) x 2 HRSG Modular Ducts & Casing, Insulation, Platforms, Walkways, Gratings, Hand Rails, 2nd Steel
148	Saudi Arabia	Aramco Jazan 4000 (MW) IGCC Power Plant x 10 HRSG - Main Steel, Ducts & Casing, Insulation, Stack, Stair Towers, 2nd Stl.
149	Saudi Arabia	Jafurah 320 (MW) Cogen CHP - Structures, Pipe Racks, Turbine Building, Walkways, Platforms, Stairs, Trusses, Secondary Steel
150	Saudi Arabia	Qurayyah (IPP) 3,927 (MW) CCPP - Diverter Damper, Duct & Casing, Insulation, Liners, Platforms, Grating, Ladders, Handrails
151	Saudi Arabia	Qurayyah (IPP) 3,927 (MW) Combined Cycle Power Plant Expansion Project - HRSG Templates & Foundation Anchorages
152	Saudi Arabia	Qurayyah (IPP) 3,927 (MW) Combined Cycle Power Plant Expansion Project HRSG and Bypass Stack
153	Singapore	Banyan 600 (MW) CCGT Anchorages - Anchor Bolts and Template for HRSG Columns & Stack
154	Singapore	Banyan 600 (MW) CCGT HRSG - Structures, Duct & Casing, Walkways, Ducts, Casing, Stacks, Platforms Gratings, 2nd Steel
155	Singapore	Floating Liquefied Natural Gas Vessel Topside HRSG Boiler Lifting Frames
156	Singapore	Sakra 600 (MW) Cogen CCGT - HRSG Structure, Duct & Casing, Stacks, Platforms, Walkways, Gratings, Secondary Steel
157	Singapore	Sakra 600 (MW) Advanced Gas Turbine Cogeneration CCPP - Uprighting Frame, Lifting Beam, Lifting Beam, Stocking Feet
158	South Korea	Floating Liquefied Natural Gas Vessel Topside HRSG Lifting Frames and Stocking Feet
159	South Korea	YEosu No.2 - 2x Vertical HRSG Main Steel, Transition Ducts, Modular Casing, Stacks, Secondary Steel
160	Turkistan	Turkistan Combined Cycle Gas Turbine Power Plant - 48 Units Air Cooled Condenser Modules Piping Package
161	U.A.E.	Al Layyah 1,026 (MW) x 2 HRSG - Modular Duct & Casing, Platforms, Stair Towers, Insulation, Liners, 2nd Steel, Gratings
162	U.A.E.	Al Taweelah Alumina Power & Steam 230MW x 2 HRSG Main Steel, Casing, Ducts, Stacks, Insulation, Liners
163	U.K.	Keadby-2 840MW CCGT HRSG NPP Main Steel, Suspension Beams, Duct & Casing, Stack, Stair Tower, Secondary Steel
164	USA	Cricket Valley Energy Center 1,125 (MW) x 3 HRSG Air Cooled Condenser Condensate Header Fabrication
165	USA	Fairview 1,050 (MW) x 2 HRSG - Modular Ducts & Casings, Liners, Insulation, Stair Towers, 2nd Steel, Platforms, Ladders
166	USA	Grand River Energy Center 495 (MW) CCPP - Unit #3 HRSG Platforms, Ladders, Stair Towers, Gratings, Handrails, 2nd Steel
167	USA	Hummel Station 1,000 (MW) CCPP 1000 x3 HRSG - Main Steel, Ducts & Casing, Stair Tower, 2nd Steel, Supports
168	USA	Lackawanna 1,480 (MW) x 3 HRSG - Modular Casing, Main Structural Steel, Ducts, Insulation & Liners, Stacks
169	USA	Lackawanna Energy Center 1,485MW Gas-Fired Power Plant x3 HRSG - 7 Units of Steel Structure Beams and Column Modules
170	USA	Moxie Freedom 1,029 (MW) x 2 HRSG - Structural Steel Modular Columns on Casings, Insulation, Liners
171	USA	Sewaren 7 - 540 (MW) HRSG - Structural Steel H-beams & Channels
172	USA	Stonewall 802 (MW) CCPP x2 HRSG - Main Steel, Ducts & Casing, Insulation, Stair Towers, 2nd Steel, Grating, Pipe Supports
173	USA	Towantic Energy Ctr. 844 (MW) CCPP x2 HRSG - Stacks, Modular Ducts & Casing, 2nd Steel, Stair Towers, Platforms, Grating
174	USA	Westmoreland 925 (MW) x 2 HRSG Platforms, Walkways, Ladders & Supports for CCPP project
175	Uzbekistan	Jizzakh 550 (MW) Combined-Cycle Power Plant x1 HRSG - Bypass Stack & Embedded Parts
176	Uzbekistan	Jizzakh 550 (MW) CCPP x1 HRSG - Inlet Duct Casing, Diverter Damper, Seal Air Piping, Platforms, Supports, Ladders
177	Uzbekistan	Jizzakh 550 (MW) Combined-Cycle Power Plant x1 HRSG Stack Damper
178	Uzbekistan	Navoi 2 - 450 (MW) CCPP HRSG - Ducts & Casing, Insulation, Stair Tower, Platforms, Ladders, 2nd Steel, Supports
179	Uzbekistan	Navoi 2 - 450 (MW) CCPP HRSG - Secondary Steel, Stair Tower, Drum Support, Platforms, Ladders, Silencer Supports
180	Uzbekistan	Surkhandarya 1600 (MW) CCPP - 54 Units ACC, A-Frame Superstructures, Gratings, Seals, Deck Plates, Rails, Handrails
181	Uzbekistan	Surkhandarya 1600 (MW) Combined-Cycle Power Plant x2 HRSG Foundation Anchorages, Column & Stack Templates
182	Uzbekistan	Surkhandarya 1600 (MW) CCPP x2 HRSG Main & Secondary Structures, Duct & Casing, Stacks, Platforms, 2nd Steel
183	Uzbekistan	Turakurgan 900 (MW) x 2 HRSG - Casing and Ducts, Insulation & Liners, Stair Tower, Platforms, Ladders, Supports, 2nd Steel
184	Uzbekistan	Turakurgan 900MW GTCC Power Plant x2 HRSG Structures, Platforms, Secondary Steel, Stair Towers, Platforms, 2nd Steel
185	Vietnam	Hiep Phucc 1 Repowering Project HRSG Main Steel, Casing, Ducts, Stack, Platforms, 2nd Steel

Keadby-2 Combined-Cycle Power Plant



MINING , CEMENT, AGRICULTURE

186	Argentina	Maleguño Cement Clinker Facility - Mine Crusher, Mill, Silo, Filter House, Pre-Heat Tower, Clinker, Platforms, Ducts Supports
187	Argentina	Rincon Lithium Mine Chloride Evaporator Module, Duct Fab & Install, Piping, Equipment, Installation E, I, & C.
188	Australia	Amrun Chilh Export Facility Temporary & Permanent Wharf Structural Steel and Platforms
189	Australia	Amrun Export Facility Marine Terminal Steel Structures, Platform, Gangway, Piping
190	Australia	Balrarnald Mineral Sands Wet Concentrator Plant Modules, Structures, Equipment, Platforms, Pipe Racks, Tanks, Walkways, E&I
191	Australia	Balrarnald Mineral Sands Project Modular Mining Unit Rotable Hopper Fabrication
192	Australia	Balrarnald Mineral Sands Project Modularized Wet Concentrator Plant - Rig Anchor Pile Caps
193	Australia	Balrarnald Mineral Sands Project Modularized Wet Concentrator Plant Distributor Hopper
194	Australia	Bibra Lake Gairdner Conveyor Loading System Steel Structures, 4 Units of Modular Grain Conveyors
195	Australia	Byerwen Coal Plant - Dry Tailings Structures, Conveyors, Piping, Modules, Transfer Stations, Chutes, Tanks, Pump Skids
196	Australia	Byerwen Modular Coal Processing Plant Structures, Modules, Transfer Stations, Supports, Chutes, Platforms, Gratings
197	Australia	CBH Mirambeena Grain Storage Structures, 4x Conveyors, Weighbridge, Bins, Elevators, Support Steel
198	Australia	Gairdner Agriculture Storage Upgrade Project Grain Storage Bin, Space Frame Dome Storage Structure
199	Australia	Gairdner Grain Storage Facility Garner Bins, Frames, Trusses, Gratings, Platforms
200	Australia	Hay Point Coal Terminal P3 Expansion Project Structural Steel, Cantilever Traveler, Walkways, Platforms, Mooring Structures
201	Australia	Iron Bridge Magnetite Mining Project Coarse Ore Stockpile Apron Feeder Modules, Dribble Chutes, Feed Hoppers, Liners.
202	Australia	Iron Bridge Mine Air Classifier Baghouse, Pipe Racks, E&I, Walkways, Supports, Stair Towers, Thickener Boxes, Launder Platforms
203	Australia	Iron Bridge Magnetite Mining Project Feed Conveyor Structures, Stair Towers, Gratings, Handrails, Launderers, Surge Bin Chutes
204	Australia	Iron Bridge Magnetite Mining Project Mining Launder, Pipe Racks, Chutes, Wear Plate Liners, Supports, Modular Hoppers
205	Australia	Iron Bridge Magnetite Mining Project Modular Air Classifier Feed Bins With Liners
206	Australia	Iron Bridge Mine Cone Crushers, Buildings, Hoppers, Conveyors, Chutes, Platforms, Handrails, Walkways, Stairways
207	Australia	Iron Bridge Mine Surge Bin Tanks, Deflector Cones, Dissipator & Stilling Boxes, Bridge Structure, Monorails, Gratings, 2nd Steel
208	Australia	Iron Bridge Mine Surge Bin Tanks, Deflector Cones, Dissipator & Stilling Boxes, Bridge Structure, Monorails, Gratings, 2nd Steel
209	Australia	Iron Bridge Magnetite Mining Project Tertiary Crushing Module, Grinding Module, Monorails, Pipe Racks
210	Australia	Iron Bridge North Star Magnetite Mining Project Lyons Feed Control Hopper Units (LFCU)
211	Australia	Kalgoorlie Gold Fimiston Plant Crushing & Feeder Structures, Chutes, Hoppers, Bins, Launder, Isolation Gates, Wear Plate
212	Australia	Kalgoorlie Gold Pipe Rack Modules, Ducting, Crusher Structures, Tailings Structures, Bulk Conveyors. HDPE Piping, Platforms
213	Australia	Karara Iron Ore Project Steel Structures for Primary Crushing Unit, Secondary and Tertiary Crushing System Structures
214	Australia	Karara Mine Plant Steel Structures, Thickener Pipe Racks, Trusses, Trestles, Ladders, Handrails Gratings
215	Australia	Kemerton Lithium Hydroxide Plant (#1) Trains 3 & 4 Modularized Plant Steel Structures, Platforms, Grating, Handrails, Piping
216	Australia	Kemerton Lithium Hydroxide Plant (#2) Trains 3 & 4 Modularized Plant Steel Structures, Platforms, Grating, Handrails, Piping
217	Australia	Mindarie Mineral Sands Screening Modules, Chutes, Boom Stackers, Surge Bins, Sump Skids, Water Process Skids, Pipework
218	Australia	Mindarie Mineral Sands Project Mobile Mining Unit Main Structures, Chassis, Hoppers, Platforms, Monorail Beams, Gratings
219	Australia	Mount Holland Lithium Hydroxide Modularized Mining Project Structures, Glaubers, Process Structures, 2nd Stl., Platforms
220	Australia	Mt Pleasant Incremental Upgrade Project Coal Handling & Preparation Plant Steel Structures
221	Australia	Olive Downs Coking Coal Complex Raw Coal Conveyors, Reclaim Conveyors, Surge Bins, Platforms, Grating, Secondary Steel
222	Australia	Olympic Dam Mineral Mine - Conveyor Modules, E&I, Pump Skids, Pipe Racks, Filter Frames, Ducts, Walkways 2nd Steel
223	Australia	Pilbara Pilgangoora Midstream Lithium Plant Acid Roast Scrubber, Handrails, Ladders, FRP Grating, Pipe Supports, Ladders
224	Australia	Roy Hill Iron Mine Wharf Temporary Steel Structures, Crane beams, Launching Beams
225	Australia	Roy Hill Iron Ore Project Headstocks, Trusses, Conveyors, Steel Structures, Overland Conveyor, Wharf Structures, Piling Frames
226	Australia	South Walker Creek Coal Handling and Preparation Plant De-bottleneck Project Structures
227	Australia	Volvo L60F Wheel Loader Fabricated Steel Loading Buckets
228	Australia	Western Ridge Crusher Modularization Structures, Crushers, Conveyor, Trusses, Transfer Station, Chutes, Platforms, Wear Plate
229	Australia	Western Ridge Iron Ore Crusher Project Carbon & Stainless Steel Piping Package

Hay Point Coal Terminal Phase 3

MINING , CEMENT, AGRICULTURE

230	Canada	Blackwater Gold Project Misc. Steel Fabricated Brackets & Components
231	Canada	Horizon Oil Sands Project Train 4 & 5 Conveyor Lines, Mining Steel Structures, and Conveyor Modules
232	Canada	Magino Gold Mine Absorption, Desorption, and Recovery Process Plant, Gold Room Plant, Platforms, Handrails, Gratings, Stairs
233	Canada	Mary River Iron Mine Ship-Loader Reclaimer Conveyor, Bridge, Steel Structures, Tower, Conveyor Line
234	Canada	Suncor Fort Hills Bitumen Mine Ore Plant Crusher & Surge Facility Structures, Conveyors, Walkways, Stair Towers, Platforms
235	Canada	Suncor Fort Hills Mine Project - Materials Handling Plant Buildings and Plant Structural Steel, Equipment Supports
236	Chile	Andino Marine Terminal Soda Ash Conveyor, Chutes, Take-Up, Grating, Handrails, Trusses, Pipe Conveyor, Galleries, 2nd Steel
237	Chile	FAM Minerals & Mining GmbH - Open Pit Mine Conveyor Steel Structures
238	Chile	Lithium Hydroxide Mine Platforms, Monorail Beams, Crane Crossbeams, Trusses, Building Structures, Platforms, 2nd Steel
239	Chile	Rajo Inca Copper Mine Structures, Crushing, Grinding, Filtration, Thickening, Tailings, and Filtration Stations, 2nd Steel
240	Chile	Salar Del Carmen Lithium Hydroxide Plant Structures, Platforms, Stair Towers, Gratings, Secondary Structures
241	Chile	Sentinel Mining Development Project - Conveyors, Bridge, Trusses, Chutes, Liners, Wear Plates, Handrails, Grating, 2nd Steel
242	Chile	Sentinel Mining Development Project - Concentrator Plant, Stacker, Conveyors, Handrails, Chutes, Liners, Wear Plate, Grating
243	Chile	Sentinel Mining Development Project - Stick-Built Mining Process Pipe Rack Structures
244	China	Electric-Drive Jaw Crushing Unit Skid Chassis
245	China	Offshore Fish Farm Hose Coupling System Track Slot Module, Coupling Frame, Rail System, Platforms, Guide Case
246	D.R.C.	Kamoa Copper Kakula Mine Structures, Tank Farm, Conveyors, Pipe Bridges, Platforms, Handrails, Building Structures
247	D.R.C.	Kamoa Copper Kakula Mining Project Phase 2A Plant Structural Steel, Gratings, Handrails
248	D.R.C.	Kamoa Kakula Copper Mine Equipment, and Supports for Substation, Slurry Processing, Mixing, Paste Distribution
249	D.R.C.	Kamoa Kakula Copper Mine Warehouse, Crushing Feed System, Concentrator, Platforms, Supports, Grating, Handrails, Ladders
250	D.R.C.	Kamoa Kakula Copper Mine Mechanical, Piping and Plate Work, Primary Structures, Crushers, Transfer Towers
251	Indonesia	Manyar Smelter Project 2 x Boiler Building Steel Structures, Stairways, Grating, Checker Plate, Handrail
252	Indonesia	Melawan Coal Mine - Conveyors, Transfer Station, Stair Towers, Gallery, Walkway, Grating, Hoppers, Grizzly, Platenwork
253	Malaysia	Teluk Rubiah Maritime Terminal Wharf Steel Structures
254	Mongolia	Oyu Tolgoi Underground Gold & Copper Mine #4 Head Frame, Tipping Chutes, Winder House, Support Structures, Brackets
255	Mongolia	Oyu Tolgoi Underground Gold & Copper Mine #4 Mineshaft Sinking Pipe Brackets
256	Mongolia	Oyu Tolgoi Underground Gold & Copper Mine Shaft #3, #4, Underground Winder Building Structural Steel, Purfins
257	Mongolia	Oyu Tolgoi Underground Gold Mine - Transfer Towers, E-House, Drive Station & Crane Bridge Supports
258	Mongolia	Oyu Tolgoi Underground Mine Structures, Conveyors, Transfer Stations, Bridge Cranes, Mechanical Plate-work, Wear Plate
259	Niger	Imouraren Uranium Mine Modular Air Cooled Condensers - A-Frames, Superstructure, C frame, Internals, Plenum Fan Rings
260	Nigeria	Tonkolili Iron Ore Mine - Bulk Conveyor Components, Steel Structure Frames, Gallery, Supports
261	Panama	Vopak Marine Terminal South Jetty Hose Tower Structural Steel, Gratings
262	Papua N.G	Kalinantu Gold Mine - Conveyors, Truss, Grating, Bins, Liners, Grizzly, Chutes, Hoppers, Tanks, Launderers, Liners, 2nd Steel
263	Peru	Quellaveco Copper Mine Conveyors, Primary & Secondary Buildings, Frames, Mechanical Fabrication, Gratings, Handrails
264	Peru	Quellaveco Copper Mine Port Project Conveyor Truss, Trestles, Gallery, Pulley Frames, Head/Tail Frames, Building Structures
265	Peru	Tintaya Mining Project Structural Steel for Transfer Tower & Belt Splicing Station, Mechanical Fabrication
266	Philippines	Hardrock Mining Multiple Platform Structures & Supports, Lower Shaft Steelwork, Handrails
267	Philippines	Philisaga Mine Platform Structures & Supports, Lower Shaft Steelwork, Handrails
268	Saudi Arabia	Yamama Cement Plant Structures, Conveyors, Transfer Towers, Hoppers, Bins, Crusher, Storage Buildings, Silos, Pipe Racks
269	Saudi Arabia	Yamama Cement Plant Structures, Conveyors, Bridges, Platforms, Gallery, Silos, Trusses
270	Serbia	Tamnava West Mine Steel Structures for Belt Conveyors and Transfer Stations
271	USA	Chemours Trail Ridge Mineral Sands - Lyons Feed Control Hoppers, Surge Bins, Platforms, Piping, Handrails, Ladders, Grating
272	USA	Twin Pines Mineral Sands Separation Plant Modules for Reheat, Drying, Dust Collection, Conveying, Bagging, Secondary Steel
273	Uzbekistan	AGL Mining Conveyor Structures, Transfer Stations, Take-Ups, Walkways, E-House, Gallery, Trusses

Tonkolili Iron Ore Mine



OIL & GAS, PETROCHEMICAL

274	Australia	Air-Cooled Condenser Structures, Platforms, Walkways, Gratings, Heat Exchangers
275	Australia	Australia Pacific LNG Project Plant Walkway and Platform HDG Gratings
276	Australia	Gas & Oil Wellhead Cellar Rings Steel Fabrication, Gratings
277	Australia	Gladstone LNG Plant - Steel Structures, Piping Modules, Integrated Separator Skids, Metering Skids, Assembly, E&I, IFAT
278	Australia	Gladstone LNG Air Cooled Condenser Module Structures, A-Frames, Superstructure, Internals, Plenum Chambers, Fan Rings
279	Australia	Pluto LNG-2 ACC Modules, A-Frames, Superstructure, Internals, Plenum, F.Rings, 2nd Steel, Grating, Plates
280	Australia	Pluto LNG-2 Structural Steel, Pipe Racks, Propane Condenser Modules, Girders, Truss, Platforms, Grating, 2nd Steel
281	Belgium	INEOS Project One - Combustion Flare Tower Structures, Riser, Platforms, Gratings, Ladders, Handrails
282	Brazil	Presidente Bernardes Refinery ACC Modules Structure, A-Frames, Superstructure, Walkways, Ladders, Platforms, Gratings
283	Canada	Suncor Energy Project Combustion Flare Tower Structures, Platforms, Gratings, Ladders, Handrails
284	Chile	Colorado Hills 60 STPD Modularized CO2 Capture and Packaging Plant Structure Steel, Modules, Piping, Equipment, E&I
285	China	Cryogenic Process Module Structures, Piping, E&I Cryogenic Process Module Steel Structure Fabrication & Assembly, Piping
286	China	Genting Floating LNG Vessel Hull Section Plate & Stiffener Section Fabrication
287	China	MEG South China Sea Natural Gas Transportation Pier Steel Structures
288	China	Ocean Vessel Sea Fastening Fabricated Steel Brackets
289	China	Shanghai Fubao Port Wharf Pipeline Piperacks Steel Structures, Construction
290	Dominican R.	Manzanillo LNG Jacket Structures, Mooring, Breasting Dolphins, Superstructure, Platforms, Tower, Walkways, 2nd Stl.
291	Egypt	Assiut Hydrocracking Complex Derrick Structure Combustion Flare Derrick Structure, Air Ducts
292	Germany	Hanseatic LNG - Pipe Racks, Trusses, Stair Towers, Platforms, 2nd Steel, Grating, Plate, Buildings, Shelters, Purlins, Cladding
293	Guyana	Uaru Floating Production Storage and Offloading (FPSO) Project Sulphur Recovery 6S2 Module
294	Indonesia	Shell Crux Substructure Project Skidway - Skid And Transverse Beam Assembly
295	Iraq	Karbala Refinery Project Plant Steel Structures, Supports, Platforms, Walkways, Gratings, Handrails
296	Kazakhstan	Tengizchevroil Oil Field Modular Air Condensers Steel Structures, Supports, Walkways, Handrails, Gratings
297	Kuwait	Kuwait Oil Pipeline Gathering Center Manifold Group Trunkline Modules Steel Structures
298	Kuwait	Mina Al Ahmadi Refinery - Coke Crusher Structures, Hoppers, Grizzly, Belt Feeder, Crusher & Transfer Tower, Chutes, Stairs
299	Malaysia	Petronas RAPID Project Modular Air Condensers Steel Structures, Supports, Walkways, Handrails, Gratings
300	New Zealand	Marsden Point Refinery Project Structural Steel, Storage Silos, Supports, Platforms, Walkways, Stair, Ladder
301	Qatar	North Field East LNG Structures, Pipe Racks, Buildings, Operation Stations, Girders, Trusses, Walkways, Platforms, 2nd Steel
302	Qatar	North Field East LNG Pipe-Racks, Platforms, Handrails, Ladders, Girders, Grating & Stair, Valve Operation Stations
303	Qatar	North Field Offshore Compression Complex Stainless Steel Stacks for Gas Turbine Generator and Gas Turbine Compressor Units
304	Qatar	North Field South LNG Structures, Pipe Racks, Pipe Bridges, Platforms, Supports, Walkways, Ladders, Grating, Handrails
305	Qatar	Ras Laffan Petrochemicals Quench Water System Pump Skids, Vessel Skids, Eductor/Oil Pump Skids, Steel Structures
306	Russia	Amur Gas Chemical Complex Mixed Feed Cracker Unit Process Flare Tower Structure
307	Russia	Amur Gas Processing Plant Mixed Feed Cracker Unit Process & Waste Flare Tower Structure
308	Russia	Gazprom Omsk Refinery Conveyors, Bridge, TT, Side Reclaimer, Tripper Car, Discharge Boom, Process Buildings, Hoppers
309	Russia	Tat-Nizhnekamsk Refinery HRCC Sulphur Recovery Unit - ACC Heat Exchangers, Structures, Walkways, Handrails, Gratings
310	Saudi Arabia	Honeywell Universal Oil Products - Modular Hydrogen Gas Purification Skid Fabrication
311	Saudi Arabia	Mechanical Modular Project - Steel Structure Frames for Process Skids
312	Singapore	Woodside Sangmar Floating Production Storage and Offloading Vessel Acid Gas Incinerator Skid Package
313	Trinidad	Shell Manatee Liquefied Natural Gas Project Built-Up Plate Girders
314	U.A.E.	Abu Dhabi National Oil Company Refining (WHRP) Crude Flexibility Production Waste Heat Recovery Skids
315	U.A.E.	ADNOC Refinery WHR Dosing Skid - Dechlorination, Antiscale, Trisodium, Antifoam, Scavenger, Chemical Dosing Tanks, Piping
316	U.A.E.	ADNOC Refinery Desalination Plant WHR Piping for Pumps, Heat Exchanger, Valve Systems, Steam and Water Flow Systems
317	U.A.E.	ADNOC Refinery Piping Spools for Heat Exch, Evap, Condensers, Chemical Skids, Pumps, Sodium Tanks, Steam Transformers
318	U.A.E.	Jebel Ali Refinery Steel Structures, Air Cooled Heat Exchanger Frames, Walkway, Grating, Plenum, Ladder, Handrail
319	USA	Freeport Liquefied Natural Gas Plant Modular Air Condensers Steel Structures, Supports, Walkways, Handrails, Gratings
320	USA	Freeport LNG ACC Module Structures, Bundle C frame, Internals, lifting beams, Plenum Chambers, Fan Rings, Guards
321	USA	Shell Franklin Chemical Plant Structures, Stair Towers, Platforms, Pipe Racks, Raw Water Intake Structures, Cooling Tower
322	Uzbekistan	Boysun High-Sulfur Natural Gas Processing Plant Combustion Flare Tower Structures, Platforms, Gratings, Ladders, Handrails

Marsden Point Refinery

POWER / BOILER PLANTS

323	Australia	Kwinana 36 (MW) Waste to Energy Project Reception Hall, Refuse & Boiler Buildings, Gratings, Stairs, Ladders, Handrails
324	Australia	Kwinana 36 (MW) W2E Fabric Filter Structure, Reactor Supports, Stair Tower, Access Steel, Duct & Casing Supports, Lime Silo
325	Belgium	AMG Furnace - Built-Up Structural Steel Sections for Vacuum Remelting Furnace
326	Canada	Canfor Pulp Northwood Mill Recovery Boiler Buckstays, Duct & Arch Supports, Furnace Wall Supports, Grating
327	Canada	Irving Pulp & Paper Evaporator Effect Support Structures, Platforms, Handrails, Container Racks, Stair Stringers, Piping Supports
328	Canada	Irving Pulp & Paper NextGen Recovery Boiler - Buildings, Elevator Shaft, Buckstays, Platforms, Piping Supports, 2nd Stl.
329	Canada	Suncor Energy Coke Boiler Replacement ACC Bundle Frames, Fan Drives, Plenum & Fan Rings, Walkways, Gratings, 2nd Stl.
330	Chile	Arauco Mapa Paper Mill Expansion Project - Assemblies, Pipe Supports, Stair Treads for Vapor Ducts, ARC, Evaporator
331	Chile	CMPC Paper Plant Embedded Steel and Anchor Bolts
332	Chile	Horcones Paper Mill Structural Steel, Supports, Pipe Racks, Pipe Bridge, Handrails, Grating
333	China	Coal-Fired Power Plant Custom Built-Up Beam Profiles
334	China	Hong Kong Integrated Waste Management Facility 480 (KW) (WTE) Casings, Ducts, Economizer Hoppers, Pass Hoppers
335	China	Hong Kong Integrated Waste Management Facility Plant Steel Structures, Platforms, Railing, Ladders, Gratings
336	China	Huanggang Pulp & Paper Mill Recovery Boiler Steel Structures, Top Girders, Platform Supports, Elevator Shafts
337	China	Huazhong Paper Mill CFB Boiler Buckstay Structures and Support Beams
338	China	Liaoning Xudabao Power Plant 1000 (MW) Steel Structures For Boiler Buildings
339	China	Process Plant Piping Supports and Steel Brackets
340	China	Sixian County Waste Incinerator Project - Custom Bent Plate Housing For Steam Soot Blowers
341	China	Zhejiang Jiahua 450 (MW) x 3 Circulating Fluidized-Bed Boiler Plant - Main Steel Structures, Girders, & Tertiary Structures
342	China	Zibo Green Energy 108 (MW) CFB Boiler Main Steel, 2nd Steel, Supports, Platforms, Elevator Shafts
343	Denmark	Hofer Amager 333 (MW) Subcritical CFPP - Flue Gas Treatment and Condensing Unit, Columns, Beams, Handrails, Gratings
344	Finland	Kumera Technology Center Furnace Support Structures, Girder
345	Fr. Guiana	Sinnamary 40 (MW) Biomass Power Plant ACC Structures, Fan Deck Plates, 2nd Steel, Fans Screens, Grid and Duct Platforms
346	Hong Kong	Lamma Island 4,000 (MW) Open Cycle Gas Turbine Steel Structures - Air Inlet & Exhaust System Supports, Girders, Grating
347	Indonesia	Indah Kiat Pulp & Paper (Unit 4) Circulating Fluidized Bed Boiler Steel Structures
348	Indonesia	Indah Kiat CFB Boiler Structures - Equipment, Economizer and Air Preheater Supports, Boiler Buckstays, ESP Building
349	Indonesia	Kerinci Fiber Line 3B Pulp & Paper Plant Steel Structures, Platforms, Walkways, Gratings, Stairways, Handrails, Ladders
350	Indonesia	Kerinci Pulp & Paper Recovery Boiler Buckstays, Bottom Beams, Boiler Wall Supports, High-Pressure Piping Supports
351	Indonesia	Kerinci Pulp & Paper Fiber Production 600 TPH Evaporation Plant Effect Supporting Structures, Surface Condenser Structures
352	Indonesia	OKI VE2 Pulp & Paper Mill Shell Lifting Beams
353	Indonesia	OKI VE2 Pulp & Paper Mills Secondary Structures for Vapor & Duct Supports
354	Indonesia	Sumsel-B 2 x 660 (MW) Coal-Fired Power Plant Top Girder & Columns Package
355	Indonesia	Delong II Captive Power Plant Boiler Steel Structures, Top Girders, Columns
356	Indonesia	Indah Kiat Pulp & Paper (Unit 3) CFB Structures, Supports, Wall and Roof Structures, Boiler Buckstays, ESP Building, Baghouse
357	Indonesia	Jawa No. 7 1050 (MW) x 2 Coal-Fired Power Generation Project Boiler Steel Structures, Box Columns, Structural Girders
358	Indonesia	PLTU Cirebon C2 1000 (MW) CFPP Duct Supporting Frame, DeSox Pipe Rack, Absorber Inlet/Outlet Ducts, Platforms
359	Japan	Buzen Biomass Power Plant - 75MW CFB Biomass Power Plant Boiler Structures, Buckstays, Secondary Steel Structures

Kwinana Waste-to-Energy Power Station



POWER / BOILER PLANTS

360	Japan	Chofu Biomass Power Plant CFB Boiler Steel Structures, Bunker Structures, Duct & Pipe Supports, Turbine Floor Structures
361	Japan	Power Plant Pipe Fittings & Custom Fabricated Components
362	Japan	Diao Iwaki Paper Power Plant Boiler Structures, Air Ducts, Support Steel, Gas Duct Supports
363	Japan	Gamagori 50 (MW) Biomass Power Plant Structural Steel, Pipe Racks, Supports, Checkered Plate, HDG Grating, 2nd Steel
364	Japan	Hachinohe 12.4 (MW) Biomass Power Plant CFB Boiler Steel Structures
365	Japan	Hyogo Pulp Plant Steel Structures for Boiler Evaporator Platforms, Stair Towers, Pipe Supports
366	Japan	Hyuga 50 (MW) Biomass Power Plant CFB Boiler & Bunker Structures, Duct & Pipe Supports, Turbine Floor Steel Structures
367	Japan	Idemitsu Tokuyama Biomass Plant Structures, Girders, Bracing, Stairways, Pipe Racks, Elevators, Monorails, Ducts, Supports
368	Japan	Imari Green Power 50 (MW) Biomass CFB Boiler Structures, Bunker Structures, Duct & Pipe Supports, Ops & Turbine Steel
369	Japan	Iwaki Daio Paper Corporation 4B Circulating Fluidized Bed Boiler Buckstays, Air Ducts
370	Japan	Iwaki Daio Paper Corporation 4B Circulating Fluidized Bed Boiler Steel Structures, Girders, Duct Supports, EV Structure
371	Japan	JFE Kurashi Mill Blast Furnace Gas (BFG) Boiler Steel Structures, Duct Racks, Pipe Racks, Stairways
372	Japan	Joetsu Thermal Power Station 2,380 (MW) Unit 1 Uprighting / Standing Beams
373	Japan	Karatsu 50 (MW) Biomass Structures, Boiler Casing, Stack, Pipe Racks, Ducts, Inlet/Outlets, Platforms, St. Towers, Gratings, 2nd
374	Japan	Kuraray Okayama 12B and 7TG Power Plant Structural Steel and Pipe Racks
375	Japan	Kushiro 112MW CFB Biomass Power Plant Boiler Structures, Buckstays, Secondary Steel Structures
376	Japan	Niigata Higashi Kou 50 (MW) Biomass Plant Structures, Boiler Supports, Buckstays, Pipe Racks, Grating, Handrails, Ladder, 2nd
377	Japan	Nippon Steel Kyushu Plant #2 Coke Furnace Trolley Running Track Mechanical Steel Structures
378	Japan	Nippon Steel Setouchi - Hirohata Cold-Rolled Plating Plant Furnace Belt Lifting Frames
379	Japan	Ofunato 75 (MW) CFB Biomass Power Plant Boiler Structures, Buckstays, Secondary Steel Structures
380	Japan	Omuta Biomass Power Plant Steel Structures, Girders, Ducts, Bracing, Stairways, Hopper Frames, Handrails, Grating
381	Japan	Onahama 75 (Mwe) Biomass Power Plant CFB Boiler Main Steel Structure Framing, Boiler Structures, Buckstays
382	Japan	Ozu 50 (MW) Biomass CFB Structures, Bunker Structures, Duct Supports, Pipe Supports, Operations & Turbine Floor Steel
383	Japan	Rengo Toneyawa No. 3 Biomass Power Plant Boiler Structures, Pipe Racks, Fly Ash Structure, Duct Supports
384	Japan	Saijo 500mw Ultra-Supercritical Thermal Power Station Buckstays, Floor Supports
385	Japan	Saiki 50 (MW) Biomass Power Plant Boiler Structures, Girders, Bracing, Stairs, Equipment Supports
386	Japan	Sakaiminato Energy 28 (MW) Biomass Plant Boiler Structures, Girders, Columns, Beams, Bracing, 2nd Steel, Grating
387	Japan	Sakaiminato Showa-Maki 28 (MW) Biomass Plant Structures, Discharge Structure, Hoppers, Soot Blower, Pipe Racks, Ducts
388	Japan	Tahara 75 (MW) Biomass Plant Boiler Building, Ducts, Elevator Shaft, Fan Structures, Bag House, Penthouse, Silo, 2nd Stl.
389	Japan	Tahara Biomass Power CFB Boiler Structures, Bunker Structures, Duct & Pipe Supports, Operations & Turbine Floor Steel
390	Japan	Takasago Project Foundation Anchorages for Air-Cooled Condensers, Ducts, Tanks, Stairs
391	Japan	Taketoyo Unit-5 (1,070MW) Biomass Plant - DeSox Structure, Duct Supports, Pipe Racks, Platforms, Buckstays, Platforms, 2nd
392	Japan	Taketoyo Unit-5 (1,070MW) Ultra-Supercritical Biomass-Fired Plant Boiler Columns, Posts, Girders, Beams, Bracing
393	Japan	Taketoyo Unit-5 (1,070MW) Biomass-Fired Power Plant Buckstays, Hopper Buckstays, Wind Box Trusses, Support Structures
394	Japan	Taketoyo Unit-5 (1,070MW) Biomass-Fired Power Plant Gas-Gas Heater Duct Structure Platform and Stairways
395	Japan	Taketoyo Unit-5 (1,070MW) Biomass-Fired Power Plant Reactor Platform, Inlet Duct Platform, Handrails, Stairway, Stair Treads
396	Japan	Taketoyo Unit-5 (1,070MW) Ultra-Supercritical Biomass-Fired Power Plant Structural Steel

Sakaiminato Energy 28 (MW) Biomass Plant



PROJECTS

MODERN GROUP 75

POWER / BOILER PLANTS

397	Japan	Tokuyama East Thermal Power Station No. 3 (300MW) Subcritical Coal & Biomass Power Plant Boiler and Hopper Buckstays
398	Japan	Tokuyama E. Subcritical Coal & Biomass Boiler Structure, Columns, Top Girder, Beams, Bracing, Box Columns, Pipe Racks
399	Japan	Tokuyama East Power Station No. 3 (300MW) Subcritical Coal & Biomass Plant Duct Supporting Frame & Pipe Racks
400	Japan	Tokuyama E. No. 3 (300MW) Coal & Biomass Plant Flue Gas Desulphurisation Unit Platform & Stairway, Ladders, Handrails
401	Japan	Tokuyama E. No. 3 (300MW) Plant Reactor Platform, Inlet Duct Platform, Handrails, Stairway, Stair Treads
402	Japan	Tokuyama E. No. 3 (300MW) Coal & Biomass Plant Steel Structures Platform & Stairway of Boiler Supporting Frame
403	Japan	Yokosuka Power Plant 2x650 (MW) Boiler Structures, Wall & EV Structure, Pipe Racks, Duct Support, Conveyor, Flue Gas Duct
404	Philippines	Dinginin 1,336 (MW) Coal-Fired Power Plant Boiler Main & Secondary Steel Structures
405	Philippines	Dinginin 1,336 (MW) CFPP Boiler Structures, Boiler Supports, Buckstays, Secondary Steel, Access Steel, Tertiary Structures
406	Poland	Ostroleka C 1000 (MW) CFPP Boiler Convective Buckstays, Lower Buckstays, Upper Buckstays, Furnace Boiler Guides
407	Russia	Big Ust Ilimsk - Pulp & Paper Recovery Boiler Structures, Box Columns, ESP Building, Buckstays, Grating, Handrails, Plates
408	Saudi Arabia	Ras Tanura Integrated Project (RTIP) VU-60 Package Boilers, Steel Ducting, Structural Steel Framing
409	Singapore	Singapore Integrated Waste Management Facility and Boiler Steel Structures, Silo Structure, Handrails, Stairs, Gratings
410	South Korea	Daesan 109 (MW) CFB Biomass Plant Structural Steel, Steam Generator and Boiler Island Equipment
411	South Korea	Gwangyang 110 (MW) Biomass Power Plant Buckstays, Separator Buckstays, Beams
412	South Korea	Gwangyang 110 (MW) Biomass Power Plant Buckstays, Silos, Handrails, Ladder, Checker Plate
413	South Korea	Hanwha G2 CFB Boiler #3 Fuel Conversion Project - Wood Chips Silos, Handrail, Checkered Plate, Stainless Steel Platework
414	South Korea	TW 25 (MW) Combined Heat & Power Biomass Plant - Steel Platforms, Handrails, Ladders, Stairs, Gratings, Checkered Plate
415	Thailand	Wangsa Siam Cellulose Recovery Boiler Structures, Box Columns, Platforms, Stairways, Evaporator Structures, Buckstays
416	Turkey	Cenal Karabiga 2 x 660MW Ultra-Supercritical CFPP Boiler Steel Structures, Columns, Beams, Bracings, Secondary Steel
417	Turkey	Cenal Karabiga 2 x 660MW Ultra-Supercritical CFPP Main Structures, Buckstays, 2nd Steel, Access Steel, Tertiary Structures
418	U.A.E.	Al Bihouth Waste to Energy Plant - 14 Units Air-Cooled Condensers Air Ducts, Manifolds, Risers, Condensate Collectors
419	U.A.E.	Al Bihouth Waste to Energy Plant - 14 ACC Main Structure, CS/Alum Plates, 2nd Steel, Grating, Ladders, Platforms
420	U.A.E.	Mohammed bin Rashid al Maktoum Solar Park - (Noor Energy 1) - 260m, 100 (MW) Solar Receiving Tower Structural Steel
421	USA	Albany Green Energy - 50MW Biomass Combined Heat & Power Plant Boiler Buck Stays, Support Beams, Auxiliary Structures
422	USA	Georgia Pacific Naheola Biomass Hybex Boiler Project Buckstays & Support Structures
423	USA	HUL Air Cooled Condenser Structures, Hood Support Structures, Fan Structure, Hoods, Handrails
424	USA	SunCoke Energy Haverhill Garner Bins, Frames, Trusses, Gratings, Platforms
425	USA	Trimble County Generating Station Pipe Conveyors, Transfer Towers, Drive frames, Chutes, Walkways, Gratings, Handrails
426	USA	Trimble County Power Station Project Chute-work, various kinds of conveyors and transfer towers
427	Vietnam	Duyen Hai 3 Thermal Power Plant Extension Project In-Plant Coal Handling Conveyor Structures
428	Vietnam	Mong Duong-1 — 1,000 (MW) Coal-Fired Power Plant Main Steel Structures, Walkways, Gratings
429	Vietnam	Thang Long 10 (MW) Waste to Energy Plant Boiler Backpass Boiler Buckstays
430	Vietnam	Thang Long Power 2 x 300 (MW) CFB Boiler Backless & Furnace Buckstays

THEME PARK STRUCTURES

431	China	LSM Launch Roller Coaster Fabricated Coaster Rail Supports
432	China	Sun Tzu Cultural Park Launch Roller Coaster Main Structural Supports, Rail Support Structures, Walkways, and Ladders

Dinginin 1,336 (MW) Coal-Fired Power Plant





Health & Safety First

At Modern Group, all employees receive extensive training on health, safety, environmental issues, and social and labor policies. Production teams, planners, and managers receive specialized training to enhance manufacturing processes, ensure product quality, and stay updated on technology. We are dedicated to fostering strong leadership, responsibility, and accountability within our team.



GOVERNANCE



Business Ethics

Modern Group is firmly dedicated to ethical business practices that prioritize our customers, employees, and reputation. We actively cultivate a culture of growth and continuous improvement in our operations. Our success is a direct result of our talented team and our strong commitment to their development. We stand resolute in our commitment to integrity, transparency, and fairness in all our relationships. Furthermore, we promote open discussions around environmental, social, and governance issues and enforce robust anti-bribery policies that adhere to international standards.

Modern Group maintains the following policies

CORPORATE

- Code of Business Conduct
- Conflict Minerals Statement
- Fair Employment & Anti-Discrimination
- Justice, Equity, Diversity, & Inclusion
- Law on the Protection of Minors
 - Prohibition of Child Labor
- Rights and Interests of Women
 - Social Compliance Policy
 - Substance Abuse Policy

SUSTAINABILITY

- Air Pollution Policy
- Environmental Policy Statement
- Modern Group ESG Report
 - Soil Pollution Policy
- Water Pollution Prevention
- Yangtze River Protection Law



North America



Europe



CERTIFICATIONS

AISC Building Fabricator
Complex Coating Endorsement 3

The American Society of
Mechanical Engineers
U, S, PP

City of Los Angeles, California
Fabricator of Unlimited Structural Steel
& High Strength Steel

Canadian Standards Association
Canadian Welding Bureau
Standard 47.1 Fusion Welding of Steel

EN 1090-1, 2 +A1 EXC 4 w/ CE Marking
Steel Structure Fabrication
& Installation.

EN 18034-7 Steel Stacks, Chimney,
Cylindrical Fabrication

ISO 3834-2 Production & Installation of
Steel Structure Components

ISO 9001 QMS, 14001 EMS,
45001 OHSM
Design, Manufacture of Steel Structure
& Modularized Production Facilities

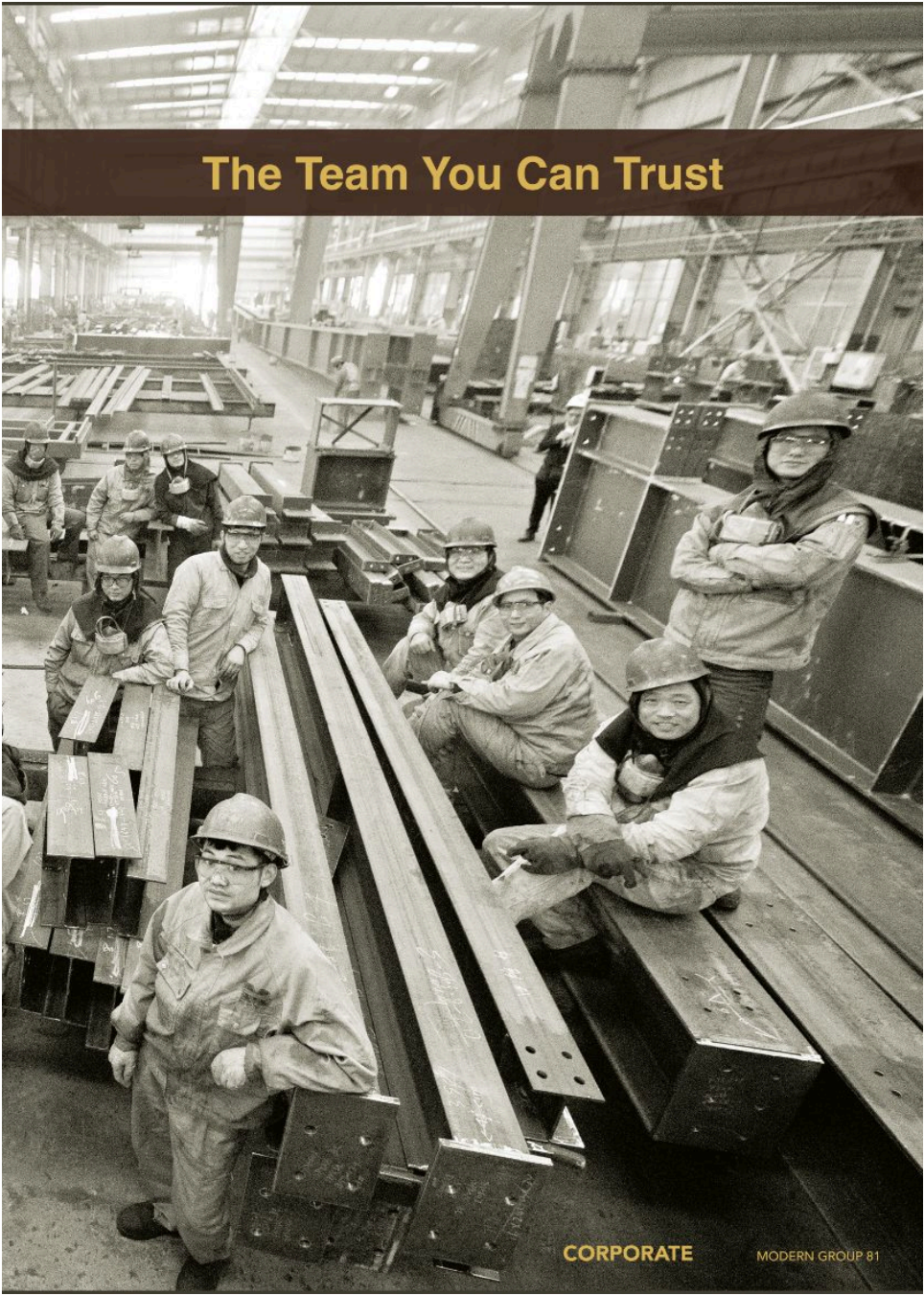


Year After Year



80 MODERN GROUP

CORPORATE

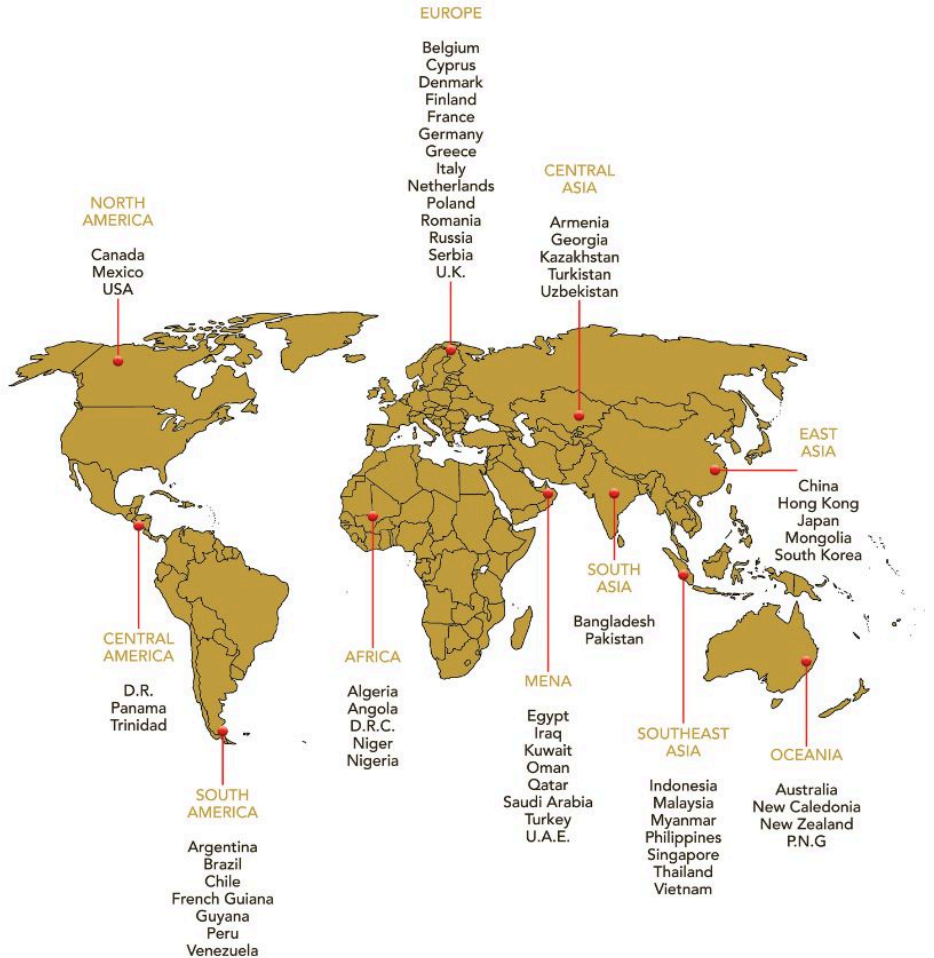


The Team You Can Trust

CORPORATE

MODERN GROUP 81

We Deliver Quality Across the Globe



Modern Heavy Industries (Taicang) Co., Ltd. 369 Longjiang Rd., Taicang Port Development Zone Taicang City, Jiangsu Province, 215433 China
 Modern Modular Engineering & Construction (Suzhou) Co., Ltd. 2669 Yanjiang Rd., Yangtze River Heavy Equipment Industrial Park, Zhangjiagang, Jiangsu Province, China
 Modern Energy Equipment Manufacturing (Suzhou) Co., Ltd. 2669 Yanjiang Rd., Yangtze River Heavy Equipment Industrial Park, Zhangjiagang, Jiangsu Province, China
 Structural Division: www.mdhiglobal.com - Modular Division: www.mmeoglobal.com
 General Info: info@mdhiglobal.com